

World on the Edge - Food and Agriculture Data - Food Security

[Undernourishment in the World, 1969-2010](#)

GRAPH: Number of Undernourished People in the World, 1969-2010

[Undernourishment in the World and in Selected Groups and Regions, 2010](#)

[Countries Receiving World Food Programme Aid, October 2010](#)

[World Monthly Food Price Indices, January 1990 – January 2011](#)

GRAPH: World Monthly Food Price Index, January 1990 – January 2011

GRAPH: World Monthly Grains Price Index, January 1990 – January 2011

GRAPH: World Monthly Price Indices for Meat, Dairy, Oils, Sugar, and Grains, January 1990 – January 2011

[Social Indicators for Top Failing States, 2010](#)

[Social Indicators for Top Strong States, 2010](#)

[Corn Production and Use for Fuel Ethanol in the United States, 1980-2010](#)

[Farmers' Markets in Operation in the United States, 1994-2010](#)

GRAPH: Farmers' Markets in Operation in the United States, 1994-2010

A full listing of data for the entire book is on-line at:

http://www.earth-policy.org/books/wote/wote_data

This is part of a supporting dataset for Lester R. Brown, **World On the Edge: How to Prevent Environmental and Economic Collapse** (New York: W.W. Norton & Company, 2010). For more information and a free download of the book, see Earth Policy Institute on-li

Undernourishment in the World, 1969-2010

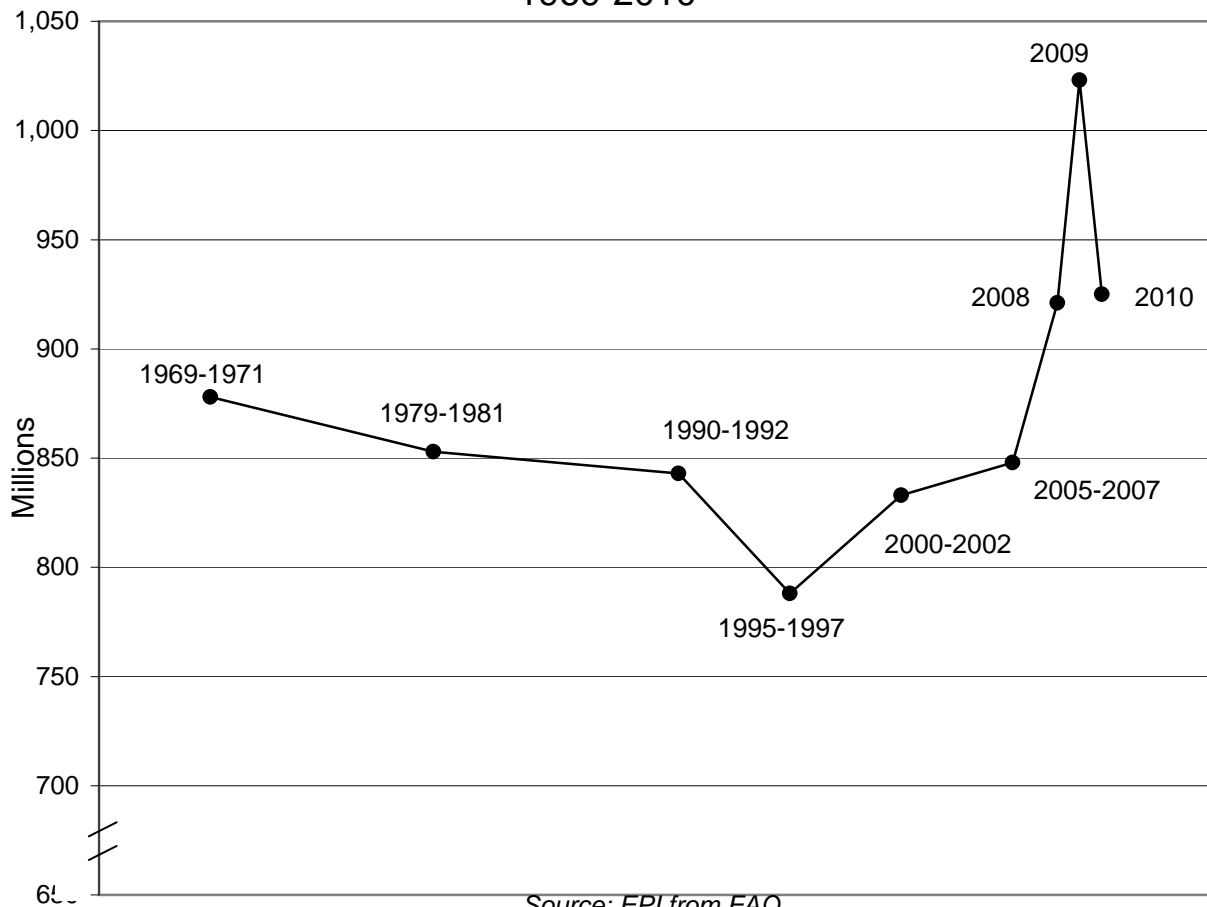
Year(s)	Number of Undernourished People Millions
1969 - 1971	878
1979 - 1981	853
1990 - 1992	843
1995 - 1997	788
2000 - 2002	833
2005 - 2007	848
2008	921
2009	1,023
2010 *	925

Note: 2010 is a projection by FAO.

Source: Compiled by Earth Policy Institute (EPI) with data for 1969-2007 from U.N. Food and Agriculture Organization (FAO), "Hunger," at www.fao.org/hunger/en, viewed 1 November 2010; data for 2008 from David Dawe, FAO, e-mail to J. Matthew Roney, EPI, 2 November 2010; data for 2009 and 2010 from FAO, "Hunger: Graphics," at www.fao.org/hunger/hunger_graphics/en, viewed 1 November 2010.

This is part of a supporting dataset for Lester R. Brown, **World on the Edge: How to Prevent Environmental and Economic Collapse** (New York: W.W. Norton & Company, 2011). For more information and a free download of the book, see Earth Policy Institute on-line at www.earth-policy.org.

Number of Undernourished People in the World, 1969-2010



Source: EPI from FAO

Undernourishment in the World and in Selected Groups and Regions, 2010

Group or Region	Undernourished People in 2010 Millions	Share of Population Percent
Developed Countries	19	2
Developing Countries	907	16
Asia and the Pacific	578	16
Latin America and the Caribbean	53	9
Near East and North Africa	37	8
Sub-Saharan Africa	239	30
World	925	13

Notes: Data are projections; columns do not add to totals due to rounding.

Source: Compiled by Earth Policy Institute from U.N. Food and Agriculture Organization (FAO), "Global Hunger Declining, but Still Unacceptably High," policy brief (Rome: September 2010); share of population calculated using U.N. Population Division, *World Population Prospects: The 2008 Revision Population Database*, at <http://esa.un.unpp>, updated 11 March 2009.

This is part of a supporting dataset for Lester R. Brown, **World on the Edge: How to Prevent Environmental and Economic Collapse** (New York: W.W. Norton & Company, 2011). For more information and a free download of the book, see Earth Policy Institute on-line at www.earth-policy.org.

Countries Receiving World Food Programme Aid, October 2010

Country/Territory	Emergency Operations ¹	Protracted Relief and Recovery Operations ²	Member of Top 20 Failing States List
Afghanistan		X	X
Algeria		X	
Armenia		X	
Bangladesh	X	X	
Benin	X		
Bhutan			
Bolivia		X	
Burkina Faso	X	X	
Burma (Myanmar)	X	X	X
Burundi		X	
Cambodia		X	
Cameroon	X		
Cape Verde			
Central African Republic	X	X	X
Chad	X	X	X
China	X		
Colombia	X	X	
Côte D'Ivoire		X	X
Cuba	X		
Democratic Republic of the Congo	X	X	X
Djibouti		X	
Dominican Republic	X		
Ecuador	X	X	
Egypt			
El Salvador		X	
Ethiopia		X	X
Gambia	X		
Georgia		X	
Ghana	X	X	
Guatemala	X	X	
Guinea	X	X	X
Guinea-Bissau		X	
Haiti	X	X	X
Honduras			
India			
Indonesia		X	
Iran		X	
Iraq		X	X
Kenya		X	X
Kyrgyzstan	X		
Lao People's Democratic Republic		X	
Lesotho		X	
Liberia		X	
Madagascar		X	
Malawi		X	
Mali		X	
Mauritania		X	
Mozambique		X	
Namibia		X	
Nepal		X	
Nicaragua			
Niger	X	X	X
North Korea	X	X	X
Occupied Palestinian Territory	X	X	
Pakistan	X	X	X
Peru			
Philippines	X	X	
Republic of Congo	X	X	
Rwanda		X	

Sao Tome and Principe			
Senegal		X	
Sierra Leone		X	
Somalia	X		X
Sri Lanka		X	
Sudan	X		X
Swaziland		X	
Syria	X		
Tajikistan		X	
Tanzania	X	X	
Timor-Leste		X	X
Togo	X		
Uganda	X	X	
Yemen	X	X	X
Zambia		X	
Zimbabwe		X	X
Total	32	56	19

¹Emergency Operations (EMOPs): WFP carries out EMOPs in countries hit by sudden disasters such as floods; by more gradually-occurring disasters such as drought or crop failure; or by civil unrest, conflict, and/or displacement of large numbers of people. The typical duration for EMOPs is between three months and one year, but an EMOP can last up to two years.

²For situations in which communities will need more help to recover and to restore food security after the EMOP expires, WFP plans and implements a Protracted Relief and Recovery Operation (PRRO).

Source: Compiled by Earth Policy Institute from U.N. World Food Programme, "Operations," at www.wfp.org/operations, viewed 5 October 2010; Fund for Peace and *Foreign Policy*, "The Failed States Index," *Foreign Policy*, July/August 2010, pp. 74–105.

This is part of a supporting dataset for Lester R. Brown, **World on the Edge: How to Prevent Environmental and Economic Collapse** (New York: W.W. Norton & Company, 2011). For more information and a free download of the book, see Earth Policy Institute on-line at www.earth-policy.org.

World Monthly Food Price Indices, January 1990 – January 2011

Month	Meat	Dairy	Grains	Oils	Sugar	Total Food
			2002-2004 = 100			
Jan-90	108.1	93.1	106.5	72.5	201.5	106.9
Feb-90	113.1	90.8	104.2	72.5	207.9	108.0
Mar-90	115.4	72.7	102.6	74.3	218.0	106.3
Apr-90	127.5	84.3	105.5	71.8	216.3	112.8
May-90	127.4	69.1	105.4	74.0	207.2	109.8
Jun-90	127.9	69.1	103.1	71.3	184.0	107.3
Jul-90	126.3	69.1	97.1	71.2	170.1	104.1
Aug-90	123.8	65.1	93.3	73.7	155.1	100.9
Sep-90	131.5	67.3	87.7	72.9	157.1	102.4
Oct-90	130.0	68.7	88.8	74.5	139.3	101.4
Nov-90	127.0	69.7	88.1	78.3	142.9	101.0
Dec-90	130.0	79.1	88.8	80.5	138.2	103.9
Jan-91	128.0	82.5	90.3	79.8	124.9	103.1
Feb-91	133.9	81.8	92.0	77.9	120.8	104.9
Mar-91	126.6	80.1	94.9	78.3	129.7	103.6
Apr-91	122.2	75.1	96.4	76.1	120.8	100.7
May-91	123.3	73.9	95.3	75.1	107.6	99.5
Jun-91	121.8	75.8	94.4	75.4	130.6	100.7
Jul-91	121.4	70.4	93.5	77.6	146.3	100.9
Aug-91	120.2	72.8	97.8	79.3	134.2	101.4
Sep-91	123.1	79.3	98.7	79.1	131.8	103.5
Oct-91	126.2	85.4	102.0	83.2	129.4	106.9
Nov-91	131.0	88.9	102.3	83.6	122.9	108.9
Dec-91	127.1	88.9	105.5	84.3	127.7	108.8
Jan-92	125.6	92.0	107.7	84.8	118.1	108.8
Feb-92	129.6	92.0	111.1	82.9	111.3	110.4
Mar-92	124.2	91.3	110.8	85.9	116.6	109.1
Apr-92	123.5	91.3	105.7	85.5	134.2	108.6
May-92	125.3	94.9	104.5	86.0	136.1	109.8
Jun-92	126.8	100.0	103.7	87.3	147.0	111.9
Jul-92	125.7	100.9	98.9	82.7	146.3	109.7
Aug-92	126.6	98.8	94.2	80.8	139.5	107.6
Sep-92	124.5	101.6	97.7	82.8	132.1	108.0
Oct-92	122.8	95.9	97.6	82.9	123.6	105.9
Nov-92	128.0	93.6	98.8	85.5	121.6	107.8
Dec-92	119.9	92.7	97.6	84.0	115.7	103.9
Jan-93	121.9	92.5	98.7	85.2	116.9	105.1
Feb-93	121.4	93.7	97.4	85.0	121.5	105.1
Mar-93	121.2	92.5	97.2	83.6	150.7	106.7
Apr-93	117.7	91.0	96.4	83.2	158.2	105.5
May-93	119.0	89.8	93.3	82.4	167.9	105.5
Jun-93	119.7	89.9	88.8	81.8	147.4	102.9
Jul-93	118.8	86.4	94.0	85.7	137.4	103.3
Aug-93	114.9	83.3	95.5	84.5	132.5	101.3
Sep-93	116.2	78.6	98.4	84.2	135.4	101.9
Oct-93	117.7	71.7	104.1	83.5	146.0	103.5
Nov-93	116.7	72.1	113.2	90.2	143.6	106.5
Dec-93	111.7	73.1	116.5	101.9	149.3	107.9
Jan-94	112.9	79.4	115.9	102.8	146.2	109.1
Feb-94	113.4	79.3	113.3	97.6	153.5	108.3
Mar-94	112.1	80.2	108.6	98.8	166.6	107.8
Apr-94	111.3	73.4	105.7	101.7	156.2	105.3
May-94	117.7	73.4	104.3	107.2	164.3	108.5
Jun-94	114.5	78.0	101.6	107.8	171.0	108.0
Jul-94	114.7	78.7	94.5	105.8	167.0	105.7
Aug-94	117.2	80.4	96.6	114.6	171.7	109.0
Sep-94	117.1	86.6	101.5	125.8	178.7	113.4
Oct-94	116.9	90.3	103.7	123.4	180.9	114.4
Nov-94	119.0	92.2	102.6	137.5	197.8	118.4

Dec-94	113.3	95.5	105.3	138.2	208.2	118.5
Jan-95	111.4	103.0	105.8	129.8	209.4	118.1
Feb-95	118.8	106.2	104.9	128.9	204.5	120.5
Mar-95	121.0	107.2	104.3	130.8	207.0	121.8
Apr-95	117.2	106.3	105.2	121.5	194.4	118.3
May-95	115.8	106.5	109.6	119.5	191.9	118.6
Jun-95	113.0	106.5	116.7	124.8	198.9	120.8
Jul-95	119.2	112.7	124.9	129.9	192.8	126.5
Aug-95	118.4	112.7	122.3	124.9	184.2	124.2
Sep-95	123.1	112.8	128.0	120.3	165.9	125.4
Oct-95	124.9	113.9	135.6	125.8	168.0	129.2
Nov-95	121.5	113.9	135.8	124.5	170.0	128.0
Dec-95	116.9	113.4	139.1	119.2	174.7	126.8
Jan-96	124.1	113.3	140.1	112.3	177.8	128.8
Feb-96	123.2	113.0	143.8	108.8	181.8	129.3
Mar-96	126.8	111.5	146.3	107.7	183.2	130.9
Apr-96	124.7	111.3	160.1	116.2	170.0	134.1
May-96	130.7	108.5	167.7	116.6	161.6	137.2
Jun-96	130.0	108.8	158.5	110.2	172.7	134.5
Jul-96	129.7	109.0	153.1	106.5	181.8	133.1
Aug-96	134.0	108.2	144.7	110.8	175.5	132.3
Sep-96	133.3	107.6	126.3	114.1	169.1	127.0
Oct-96	130.0	108.5	119.8	109.6	157.8	122.8
Nov-96	127.9	106.3	113.9	110.6	152.1	119.8
Dec-96	126.6	106.6	114.4	111.0	152.4	119.6
Jan-97	121.6	106.8	114.6	112.5	151.7	118.1
Feb-97	125.1	105.7	115.5	113.3	153.4	119.6
Mar-97	130.0	105.3	118.9	111.4	157.7	122.2
Apr-97	129.8	103.9	119.1	111.9	160.4	122.2
May-97	131.6	104.3	115.6	112.6	158.1	121.9
Jun-97	125.7	103.6	109.4	109.6	162.2	117.9
Jul-97	123.8	102.6	104.8	104.8	159.2	115.0
Aug-97	123.0	102.4	110.4	104.7	166.0	116.6
Sep-97	120.3	104.4	109.6	108.7	160.8	116.0
Oct-97	118.8	107.1	110.8	116.9	161.9	117.5
Nov-97	118.5	107.6	108.7	123.3	170.5	118.4
Dec-97	109.9	107.7	107.5	120.4	175.0	115.1
Jan-98	107.2	107.6	106.1	124.6	163.9	113.5
Feb-98	108.3	105.6	106.1	127.3	152.1	113.1
Mar-98	109.3	102.6	106.8	131.0	139.6	112.7
Apr-98	108.2	102.2	102.9	133.0	137.5	111.4
May-98	104.1	100.2	101.9	139.3	131.0	109.8
Jun-98	104.8	98.7	100.1	129.2	114.9	106.7
Jul-98	100.8	98.5	97.4	129.3	122.6	105.1
Aug-98	99.5	98.7	91.7	128.2	120.3	102.8
Sep-98	99.3	95.9	91.5	130.1	102.6	101.2
Oct-98	99.3	92.9	97.9	130.1	105.9	102.7
Nov-98	98.1	92.9	98.7	130.2	114.4	103.1
Dec-98	99.5	93.1	96.6	126.7	114.6	102.6
Jan-99	97.7	93.0	97.1	119.3	115.1	101.1
Feb-99	98.1	91.8	93.4	105.9	96.8	96.8
Mar-99	98.4	90.7	93.7	96.5	85.4	94.6
Apr-99	95.9	85.8	91.5	100.5	76.9	92.3
May-99	96.1	84.9	90.1	96.8	81.6	91.7
Jun-99	96.7	84.6	91.3	86.6	85.6	91.0
Jul-99	97.8	83.1	87.9	77.9	76.3	88.3
Aug-99	100.3	83.1	90.4	83.5	81.6	91.0
Sep-99	98.7	83.8	89.5	86.0	94.6	91.6
Oct-99	98.3	84.0	87.0	84.5	96.1	90.7
Nov-99	98.9	84.7	86.5	81.9	92.2	90.2
Dec-99	96.5	86.3	84.7	79.4	85.3	88.4
Jan-00	93.3	88.8	87.1	77.5	79.6	87.6
Feb-00	98.5	89.2	88.2	73.7	75.1	89.0
Mar-00	99.5	88.6	86.7	75.2	72.9	88.8

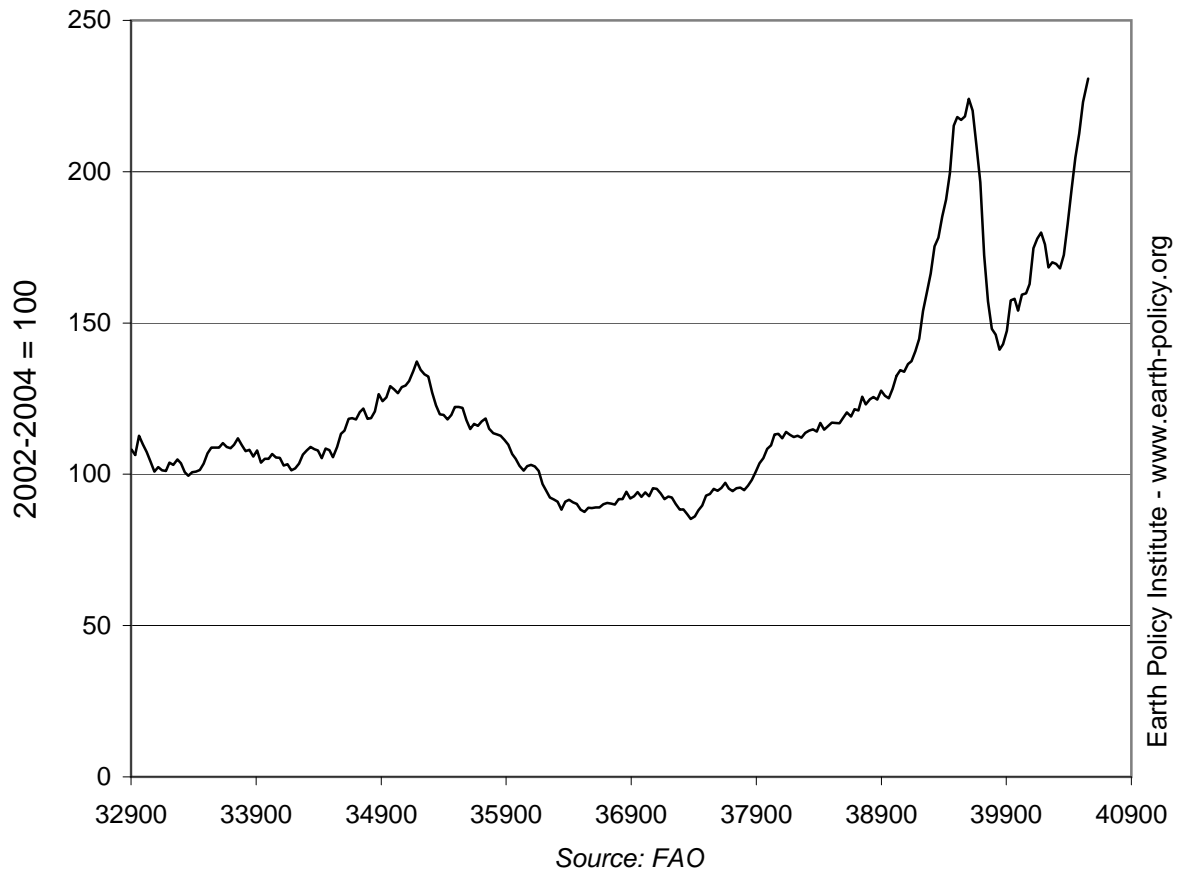
Apr-00	96.9	89.0	86.1	77.3	85.4	89.0
May-00	96.8	89.7	86.3	70.0	98.1	89.1
Jun-00	97.4	93.9	82.5	67.4	118.8	90.1
Jul-00	96.7	97.2	78.6	67.0	136.7	90.5
Aug-00	94.7	97.9	77.8	65.3	148.1	90.3
Sep-00	93.4	100.2	80.8	60.7	142.3	90.0
Oct-00	92.7	102.9	84.9	58.3	152.5	91.7
Nov-00	93.0	103.6	86.2	60.3	140.9	91.7
Dec-00	96.7	104.4	89.4	61.0	142.2	94.2
Jan-01	90.1	103.9	89.3	59.9	146.5	92.0
Feb-01	96.0	103.5	87.7	57.8	140.1	92.8
Mar-01	100.7	104.7	86.6	60.8	131.6	94.1
Apr-01	99.4	104.9	84.3	60.4	124.1	92.5
May-01	100.1	109.2	84.3	58.2	136.0	94.0
Jun-01	97.0	109.8	83.6	61.8	128.3	92.8
Jul-01	96.6	110.6	87.1	75.4	124.8	95.4
Aug-01	97.2	109.6	86.7	79.6	115.1	95.2
Sep-01	97.9	109.0	85.8	72.9	108.4	93.7
Oct-01	95.8	110.7	85.3	69.4	96.4	91.8
Nov-01	93.8	107.3	86.6	75.7	108.9	92.6
Dec-01	93.4	101.5	87.0	79.2	111.1	92.3
Jan-02	91.4	94.8	87.1	77.2	110.5	90.2
Feb-02	92.1	94.8	85.3	74.8	92.9	88.3
Mar-02	94.4	91.2	84.5	74.5	95.0	88.4
Apr-02	91.2	88.2	82.5	76.9	97.7	86.8
May-02	89.6	80.7	84.6	80.9	86.2	85.3
Jun-02	90.1	76.3	87.3	87.8	81.6	86.1
Jul-02	90.7	72.7	93.5	88.8	90.6	88.1
Aug-02	88.3	71.7	100.3	93.9	89.3	89.7
Sep-02	88.2	73.9	110.9	90.0	98.8	93.0
Oct-02	86.3	75.8	110.0	93.4	106.6	93.4
Nov-02	86.8	80.5	107.5	101.5	111.1	95.2
Dec-02	85.5	86.4	101.3	104.4	112.8	94.6
Jan-03	89.1	89.3	98.5	102.0	116.2	95.5
Feb-03	91.2	92.7	98.5	99.0	127.7	97.2
Mar-03	91.3	93.8	95.8	95.0	116.8	95.3
Apr-03	91.2	92.0	95.5	95.6	110.0	94.5
May-03	93.2	91.7	97.4	97.8	101.7	95.4
Jun-03	96.0	91.6	95.7	99.6	95.4	95.6
Jul-03	96.6	92.7	92.7	95.2	97.1	94.7
Aug-03	97.7	93.6	97.6	92.7	96.9	96.2
Sep-03	102.8	96.5	97.5	96.9	84.9	98.2
Oct-03	102.7	100.6	98.4	109.2	84.6	100.8
Nov-03	104.5	102.4	103.6	111.4	86.3	103.6
Dec-03	104.9	104.5	105.4	115.2	89.2	105.3
Jan-04	112.2	106.8	108.0	115.4	82.4	108.4
Feb-04	107.8	113.0	110.6	121.4	82.9	109.6
Mar-04	111.9	114.7	114.7	122.8	91.6	113.2
Apr-04	109.1	115.7	117.6	123.2	93.3	113.4
May-04	107.9	119.1	115.3	117.8	90.0	111.9
Jun-04	116.9	124.2	111.6	106.9	98.3	114.0
Jul-04	116.9	127.4	103.0	105.8	112.3	113.0
Aug-04	117.4	127.7	100.5	106.7	107.5	112.3
Sep-04	116.7	128.8	101.6	107.3	109.1	112.8
Oct-04	113.6	129.6	100.6	105.7	119.9	112.1
Nov-04	116.3	131.8	102.0	107.2	115.8	113.7
Dec-04	117.4	132.9	103.0	105.7	117.1	114.4
Jan-05	117.8	133.6	104.0	101.5	123.7	114.8
Feb-05	116.3	134.3	102.4	99.8	129.2	114.1
Mar-05	119.7	135.0	105.0	107.5	126.0	117.0
Apr-05	119.1	133.6	100.6	105.4	121.9	114.8
May-05	123.6	134.2	99.7	103.8	121.8	115.9
Jun-05	123.8	133.9	101.7	104.6	128.4	117.1
Jul-05	120.5	135.1	102.9	103.8	136.8	117.0

Aug-05	120.3	137.3	101.8	100.7	141.0	116.8
Sep-05	121.3	138.0	104.6	102.6	146.3	118.7
Oct-05	120.2	137.6	107.0	107.3	157.8	120.4
Nov-05	119.0	136.7	104.6	105.0	161.5	119.1
Dec-05	120.3	134.9	106.9	101.8	189.4	121.5
Jan-06	113.7	130.3	107.7	101.7	223.5	121.1
Feb-06	116.5	130.5	111.4	103.4	254.6	125.6
Mar-06	113.6	128.0	110.0	103.6	244.7	123.1
Apr-06	116.7	125.4	112.0	105.3	248.2	124.8
May-06	116.5	124.9	116.3	108.3	238.7	125.5
Jun-06	119.1	124.6	115.6	108.1	218.5	124.7
Jul-06	120.5	125.0	120.0	112.3	227.8	127.7
Aug-06	123.6	123.2	118.3	116.6	190.9	126.0
Sep-06	122.8	123.3	122.9	113.4	171.5	125.1
Oct-06	121.4	125.9	135.5	115.2	165.2	128.3
Nov-06	119.4	132.3	144.4	124.4	167.1	132.5
Dec-06	118.1	142.2	143.9	131.6	164.2	134.4
Jan-07	116.8	146.3	143.8	130.8	155.4	133.8
Feb-07	117.2	153.1	149.4	132.1	150.0	136.4
Mar-07	117.2	159.3	148.3	134.5	148.1	137.4
Apr-07	118.8	175.7	144.4	146.8	137.9	140.6
May-07	122.7	181.1	146.4	158.1	133.8	144.7
Jun-07	126.3	209.0	155.2	165.9	131.8	154.0
Jul-07	127.0	234.1	155.2	171.4	144.3	160.1
Aug-07	130.1	245.7	165.7	176.7	139.1	166.4
Sep-07	132.2	252.4	187.6	184.7	138.4	175.3
Oct-07	128.3	257.1	193.9	196.0	141.9	178.2
Nov-07	132.8	268.6	196.4	214.1	143.3	185.1
Dec-07	131.7	266.2	215.8	218.0	152.0	190.8
Jan-08	136.6	255.7	231.4	241.6	170.0	199.6
Feb-08	137.8	252.1	271.5	265.1	191.7	215.2
Mar-08	143.5	248.7	271.7	277.4	187.3	218.1
Apr-08	148.1	241.7	274.3	267.6	178.2	217.1
May-08	157.8	239.9	267.0	271.5	171.3	218.3
Jun-08	164.4	240.6	273.7	282.7	172.1	224.1
Jul-08	168.2	238.9	256.6	264.8	201.9	220.2
Aug-08	170.4	227.2	239.5	221.6	207.3	208.6
Sep-08	169.8	203.2	225.8	199.9	192.0	196.5
Oct-08	160.9	185.0	190.5	152.8	168.9	172.4
Nov-08	146.0	159.6	178.2	133.5	171.7	157.1
Dec-08	135.3	142.0	174.3	126.4	166.7	148.0
Jan-09	126.4	122.2	184.6	133.6	177.5	146.2
Feb-09	120.4	114.3	177.4	131.0	187.7	141.2
Mar-09	124.1	117.7	177.8	128.8	190.2	143.0
Apr-09	127.6	117.4	179.0	147.1	193.7	147.4
May-09	133.4	123.7	185.5	166.9	227.8	157.5
Jun-09	137.3	122.8	185.4	159.6	233.1	158.0
Jul-09	139.5	125.9	167.1	143.7	261.5	154.1
Aug-09	140.0	129.3	162.1	156.3	318.4	159.4
Sep-09	138.4	144.0	157.7	149.6	326.9	159.8
Oct-09	134.4	157.5	166.1	151.7	321.3	162.8
Nov-09	137.5	208.1	171.0	161.7	315.9	174.7
Dec-09	136.1	215.6	171.1	169.3	334.0	177.9
Jan-10	140.5	202.0	170.3	168.8	375.5	179.8
Feb-10	142.0	191.4	164.2	169.2	360.8	175.9
Mar-10	144.7	187.4	157.8	174.8	264.8	168.3
Apr-10	150.8	204.3	154.8	173.5	233.4	170.0
May-10	151.7	209.2	155.1	170.4	215.7	169.5
Jun-10	152.4	203.1	151.2	168.4	224.9	168.1
Jul-10	151.0	197.8	163.3	174.4	247.4	172.5
Aug-10	155.4	192.9	185.3	192.4	262.7	182.8
Sep-10	153.4	198.4	208.3	197.6	318.1	194.0
Oct-10	157.3	202.6	219.9	220.0	349.3	204.6
Nov-10	160.4	207.8	223.3	243.3	373.4	212.5
Dec-10	165.9	208.4	237.8	263.0	398.4	223.1
Jan-11	165.9	221.3	244.8	277.7	420.2	230.7

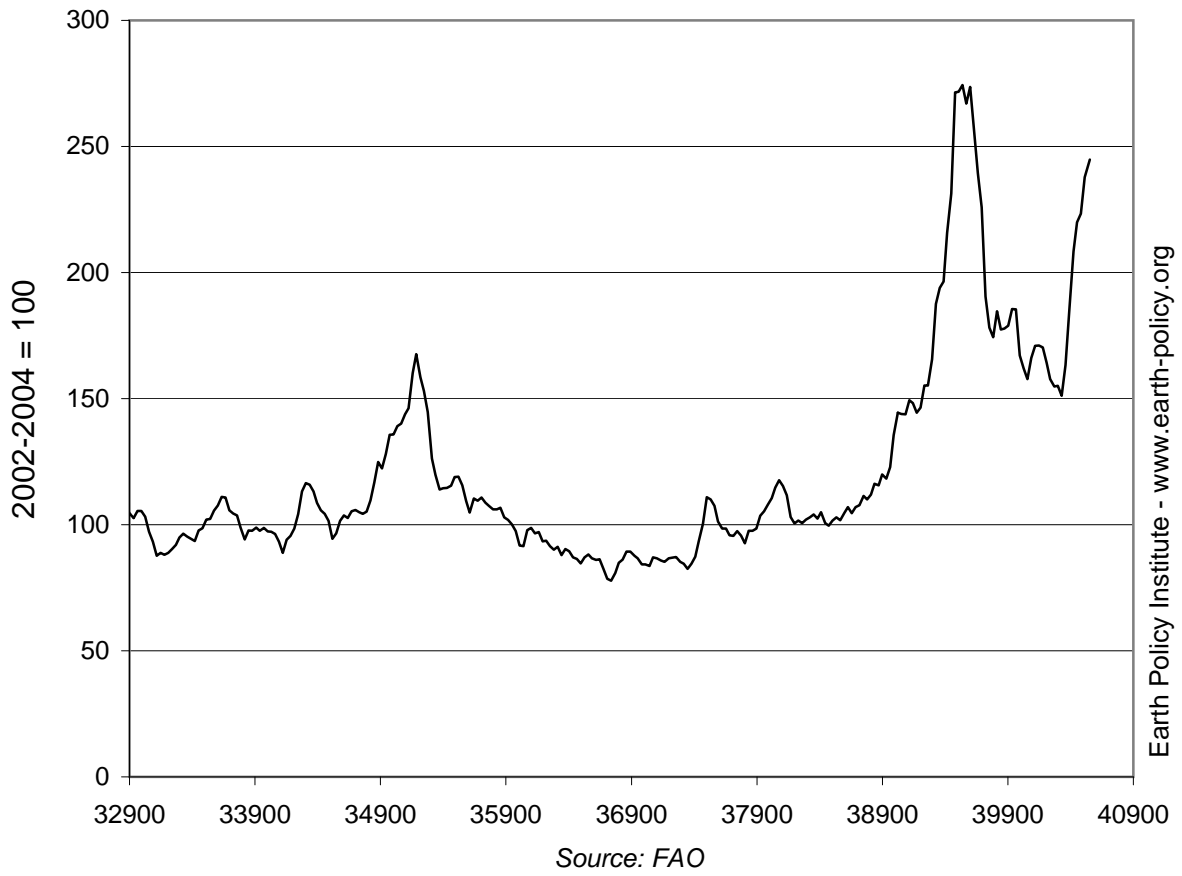
Source: U.N. Food and Agriculture Organization, "FAO Food Price Index," at www.fao.org/worldfoodsituation/FoodPricesIndex/en, updated February 2011.

This is part of a supporting dataset for Lester R. Brown, **World on the Edge: How to Prevent Environmental and Economic Collapse** (New York: W.W. Norton & Company, 2011). For more information and a free download of the book, see Earth Policy Institute on-line at www.earth-policy.org.

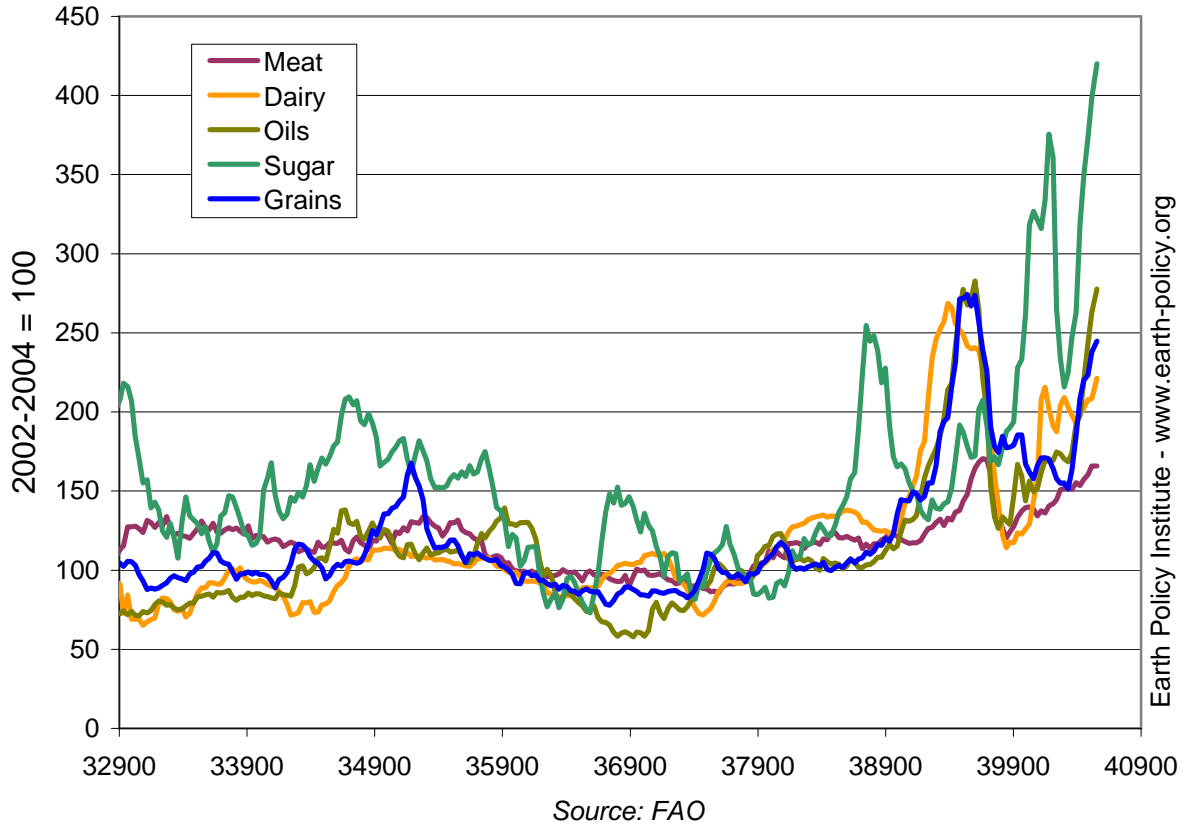
World Monthly Food Price Index, January 1990 - January 2011



World Monthly Grains Price Index, January 1990 - January 2011



World Monthly Price Indices for Meat, Dairy, Oils, Sugar, and Grains, January 1990 - January 2011



Social Indicators for Top Failing States, 2010

Country	Failed State Rank (2010) ¹	Failed State Score (2010) ¹	GDP Per Capita (2008) Current PPP-Adjusted Dollars ²	Undernourished Population (2005-2007) Percent	Net Imports as a Share of Grain Consumption ³ (Latest Year) Percent ⁴	Recipient of WFP Food Aid (2010)	Primary School Net Enrollment (Latest Year) Percent ⁵	Adult Literacy Rate (Latest Year) Percent
Somalia	1	114.3	-	-	47	Yes	-	-
Chad	2	113.3	1,661	37	11	Yes	61	33
Sudan	3	111.8	2,312	22	24	Yes	39	69
Zimbabwe	4	110.2	347	30	44	Yes	90	91
Dem. Rep. of the Congo	5	109.9	327	69	28	Yes	-	67
Afghanistan	6	109.3	775	-	37	Yes	-	28
Iraq	7	107.3	3,481	-	59	Yes	88	78
Central African Republic	8	106.4	739	40	0	Yes	67	55
Guinea	9	105.0	1,061	17	17	Yes	71	38
Pakistan	10	102.5	2,617	26	-9	Yes	66	54
Haiti	11	101.6	1,181	57	56	Yes	-	-
Côte d'Ivoire	12	101.2	1,645	14	49	Yes	57	55
Kenya	13	100.7	1,701	31	27	Yes	83	87
Nigeria	14	100.2	2,165	6	15	No	61	60
Yemen	15	100.0	2,414	31	72	Yes	73	61
Burma	16	99.4	1,153	16	-6	Yes	-	92
Ethiopia	17	98.8	881	41	7	Yes	83	36
Timor-Leste	18	98.2	2,310	31	33	Yes	82	-
North Korea	19	97.8	-	33	14	Yes	-	100
Niger	20	97.8	736	20	8	Yes	54	29

Notes:

"-" indicates no data available.

¹ Failed state ranks and scores for 2010 are based on 2009 data.

² Purchasing-power-parity (PPP) adjustment attempts to make currency among different countries comparable based on the amount of currency required to purchase the same volume of goods in each country. The IMF expresses PPP-adjusted figures in international dollars, a theoretical currency that corresponds to nominal U.S. dollars.

³ Negative values indicate that the country is a net exporter of grain.

⁴ Figure for Timor-Leste is based on FAO figures for "domestic supply." Figures for remaining countries are based on USDA figures for "domestic consumption."

⁵ Enrollment of the official age group for primary school as a percentage of the corresponding population.

Source: Compiled by Earth Policy Institute with failed state ranks and scores from Fund for Peace and *Foreign Policy*, "The Failed States Index," *Foreign Policy*, July/August 2010; GDP per capita from International Monetary Fund, *World Economic Outlook Database*, at www.imf.org/external/pubs/ft/weo/2010/02/weodata/index.aspx, updated October 2010; undernourishment from U.N. Food and Agriculture Organization (FAO), "Food Security Statistics," at www.fao.org/economic/ess/food-security-statistics/en, updated 13 September 2010; grain imports and consumption from U.S. Department of Agriculture, *Production, Supply and Distribution*, electronic database, at www.fas.usda.gov/psdonline, updated 10 December 2010, and from FAO, *FAOSTAT*, electronic database, at fao.faostat.org, updated 2 June 2010; WFP food aid recipients from U.N. World Food Programme (WFP), "Countries," at www.wfp.org/countries, viewed 29 November 2010; primary enrollment and literacy from UNESCO Institute for Statistics, *Data Centre*, electronic database, at stats.uis.unesco.org, viewed 12 November 2010, and from UNESCO, *EFA Global Monitoring Report 2010: Reaching the Marginalized* (Paris, 2010), statistical tables.

Social Indicators for Top Strong States, 2010

Country	Failed State Rank (2010) ¹	Failed State Score (2010) ¹	GDP Per Capita (2008) Current PPP-Adjusted Dollars ²	Undernourished Population (2005-2007) Percent	Net Imports as a Share of Grain Consumption ³ (Latest Year) Percent ⁴	Recipient of WFP Food Aid (2010)	Primary School Net Enrollment (Latest Year) Percent ⁵	Adult Literacy Rate (Latest Year) Percent
Norway	177	18.7	52,870	<5	34	No	98.7	-
Finland	176	19.3	36,205	<5	-22	No	96.0	-
Sweden	175	20.9	37,878	<5	-22	No	94.6	-
Switzerland	174	21.8	41,405	<5	38	No	94.2	-
Ireland	173	22.4	41,827	<5	34	No	97.1	-
Denmark	172	22.9	37,512	<5	-8	No	94.8	-
New Zealand	171	23.9	27,140	<5	22	No	99.5	-
Austria	170	27.2	39,889	<5	-3	No	97.0	-
Luxembourg	168	27.3	82,093	<5	13	No	95.7	-
Australia	168	27.3	38,246	<5	-124	No	96.9	-
Canada	166	27.9	39,031	<5	-55	No	99.5	-
Netherlands	166	27.9	41,323	<5	94	No	98.7	-
Iceland	165	29.8	40,635	<5	100	No	97.6	-
Japan	164	31.3	33,996	<5	74	No	100.0	-
Belgium	163	32.0	36,339	<5	57	No	98.4	-
Portugal	162	33.1	23,082	<5	74	No	98.7	94.6
United Kingdom	161	33.9	36,079	<5	5	No	99.6	-
Singapore	160	34.8	51,247	-	100	No	-	94.5
France	159	34.9	34,178	<5	-71	No	98.4	-
United States	158	35.3	47,155	<5	-25	No	92.0	-

Notes:

"-" indicates no data available.

¹ Failed state ranks and scores for 2010 are based on 2009 data.

² Purchasing-power-parity (PPP) adjustment attempts to make currency among different countries comparable based on the amount of currency required to purchase the same volume of goods in each country. The IMF expresses PPP-adjusted figures in international dollars, a theoretical currency that corresponds to nominal U.S. dollars.

³ Negative values indicate that the country is a net exporter of grain.

⁴ Figures for Austria, Belgium, Denmark, Finland, France, Iceland, Ireland, Luxembourg, the Netherlands, Portugal, Sweden, and the United Kingdom are based on FAO figures for "domestic supply." Figures for remaining countries are based on USDA figures for "domestic consumption."

⁵ Enrollment of the official age group for primary school as a percentage of the corresponding population.

Source: Compiled by Earth Policy Institute with failed state ranks and scores from Fund for Peace and *Foreign Policy*, "The Failed States Index," *Foreign Policy*, July/August 2010; GDP per capita from International Monetary Fund, *World Economic Outlook Database*, at www.imf.org/external/pubs/ft/weo/2010/02/weodata/index.aspx, updated October 2010; undernourishment from U.N. Food and Agriculture Organization (FAO), "Food Security Statistics," at www.fao.org/economic/ess/food-security-statistics/en, updated 13 September 2010; grain data for European Union members and Iceland from FAO, *FAOSTAT*, electronic database, at faostat.fao.org, updated 2 June 2010; grain data for remaining countries from U.S. Department of Agriculture (USDA), *Production, Supply and Distribution*, electronic database, at www.fas.usda.gov/psdonline, updated 10 December 2010; WFP food aid recipients from U.N. World Food Programme (WFP), "Countries," at www.wfp.org/countries, viewed 29 November 2010; primary enrollment and literacy from UNESCO Institute for Statistics, *Data Centre*, electronic database, at stats.uis.unesco.org, viewed 12 November 2010.

Corn Production and Use for Fuel Ethanol in the United States, 1980-2010

Year	Corn Production Million Tons	Total Grain Production Million Tons	Corn Used for Fuel Ethanol Million Tons	Share of Grain Used for Fuel Ethanol * Percent
1980	169	268	0.9	0.3
1981	206	328	2.2	0.8
1982	209	331	3.6	1.1
1983	106	206	4.1	1.2
1984	195	313	5.9	2.9
1985	225	345	6.9	2.2
1986	209	313	7.4	2.1
1987	181	278	7.1	2.3
1988	125	204	7.3	2.6
1989	191	282	8.2	4.0
1990	202	310	8.9	3.1
1991	190	278	10.1	3.3
1992	241	350	10.8	3.9
1993	161	257	11.6	3.3
1994	255	353	13.5	5.3
1995	188	275	10.1	2.8
1996	235	333	10.9	4.0
1997	234	334	12.4	3.7
1998	248	347	13.2	3.9
1999	240	332	14.4	4.1
2000	252	340	16.0	4.8
2001	241	321	18.0	5.3
2002	228	294	25.3	7.9
2003	256	345	29.7	10.1
2004	300	385	33.6	9.7
2005	282	363	40.7	10.6
2006	268	335	53.8	14.8
2007	331	412	77.5	23.1
2008	307	400	93.4	22.7
2009	333	416	114.3	28.6
2010	336	419	119.4	28.7

* Note: Nearly all of the grain used for fuel ethanol in the United States is corn; the small share of other grain used is not included in these figures. Also note that corn used for fuel ethanol in a given year comes from the previous year's crop; therefore, the 119 million tons of corn used for fuel ethanol in 2010 is reported as 28.7 percent of the 2009 grain crop of 416 million tons.

Source: Compiled by Earth Policy Institute with corn used for fuel ethanol from U.S. Department of Agriculture (USDA), *Feed Grains Database*, electronic database, at www.ers.usda.gov/Data/FeedGrains, updated 14 July 2010; U.S. corn and grain production from USDA, *Production, Supply and Distribution*, electronic database, at www.fas.usda.gov/psdonline, updated 9 July 2010.

This is part of a supporting dataset for Lester R. Brown, **World on the Edge: How to Prevent Environmental and Economic Collapse** (New York: W.W. Norton & Company, 2011). For more information and a free download of the book, see Earth Policy Institute on-line at www.earth-policy.org.

Farmers' Markets in Operation in the United States, 1994-2010

<u>Year</u>	<u>Farmers' Markets</u>
1994	1,755
1996	2,410
1998	2,746
2000	2,863
2002	3,137
2004	3,706
2006	4,385
2008	4,685
2009	5,274
2010	6,132

Source: U.S. Department of Agriculture, Agricultural Marketing Service, "Farmers Market Growth: 1994-2010," at www.ams.usda.gov, updated 4 August 2010.

This is part of a supporting dataset for Lester R. Brown, **World on the Edge: How to Prevent Environmental and Economic Collapse** (New York: W.W. Norton & Company, 2011). For more information and a free download of the book, see Earth Policy Institute on-line at www.earth-policy.org.

Farmers' Markets in Operation in the United States, 1994-2010

