

World on the Edge - Population, Health, and Society Data - Health

[Undernourishment in the World, 1969-2010](#)

GRAPH: Number of Undernourished People in the World, 1969-2010

[Undernourishment in the World and in Selected Groups and Regions, 2010](#)

[Countries Receiving World Food Programme Aid, October 2010](#)

[Life Expectancy for the World and Selected Groups and Regions, 1950-2005, with Projection to 2050](#)

GRAPH: Life Expectancy for the World, 1950-2005, with Projection to 2050

GRAPH: Life Expectancy for Africa, 1950-2005, with Projection to 2050

GRAPH: Life Expectancy for Sub-Saharan Africa, 1950-2005, with Projection to 2050

GRAPH: Life Expectancy for Asia, 1950-2005, with Projection to 2050

GRAPH: Life Expectancy for Top 20 Failing States, 1950-2005, with Projection to 2050

[Leading Causes of Death in the World, 2004](#)

[Leading Causes of Death in China: Urban Population, 1982-2008](#)

[Leading Causes of Death in China: Rural Population, 1982-2008](#)

[Global Wild Poliovirus Cases, 1985-2010](#)

GRAPH: Global Wild Poliovirus Cases, 1985-2010

A full listing of data for the entire book is on-line at:

http://www.earth-policy.org/books/wote/wote_data

This is part of a supporting dataset for Lester R. Brown, **World On the Edge: How to Prevent Environmental and Economic Collapse** (New York: W.W. Norton & Company, 2010). For more information and a free download of the book, see Earth Policy Institute on-line at www.earth-policy.org.

Undernourishment in the World, 1969-2010

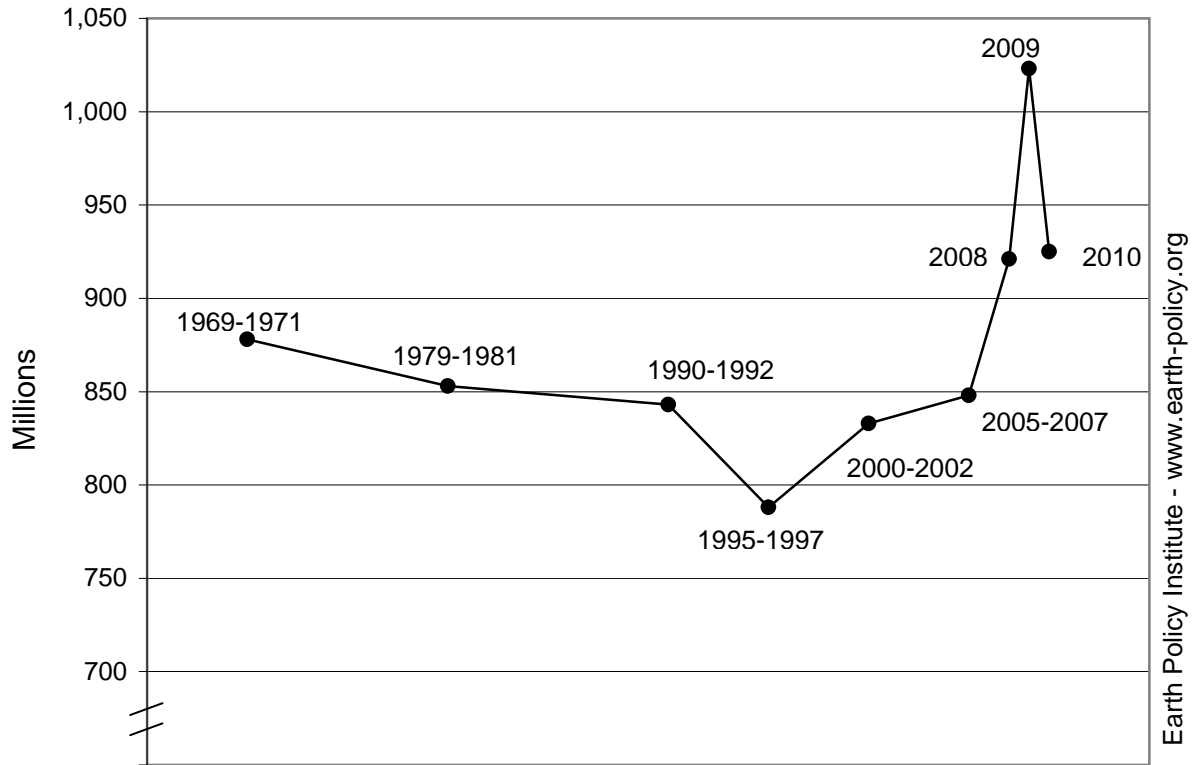
| Year(s) | Number of Undernourished People Millions |
|-------------|---|
| 1969 - 1971 | 878 |
| 1979 - 1981 | 853 |
| 1990 - 1992 | 843 |
| 1995 - 1997 | 788 |
| 2000 - 2002 | 833 |
| 2005 - 2007 | 848 |
| 2008 | 921 |
| 2009 | 1,023 |
| 2010 * | 925 |

Note: 2010 is a projection by FAO.

Source: Compiled by Earth Policy Institute (EPI) with data for 1969-2007 from U.N. Food and Agriculture Organization (FAO), "Hunger," at www.fao.org/hunger/en, viewed 1 November 2010; data for 2008 from David Dawe, FAO, e-mail to J. Matthew Roney, EPI, 2 November 2010; data for 2009 and 2010 from FAO, "Hunger: Graphics," at www.fao.org/hunger/hunger_graphics/en, viewed 1 November 2010.

This is part of a supporting dataset for Lester R. Brown, **World on the Edge: How to Prevent Environmental and Economic Collapse** (New York: W.W. Norton & Company, 2011). For more information and a free download of the book, see Earth Policy Institute on-line at www.earth-policy.org.

Number of Undernourished People in the World, 1969-2010



Source: EPI from FAO

Undernourishment in the World and in Selected Groups and Regions, 2010

| Group or Region | Undernourished People in 2010 Millions | Share of Population Percent |
|---------------------------------|--|-----------------------------------|
| Developed Countries | 19 | 2 |
| Developing Countries | 907 | 16 |
| Asia and the Pacific | 578 | 16 |
| Latin America and the Caribbean | 53 | 9 |
| Near East and North Africa | 37 | 8 |
| Sub-Saharan Africa | 239 | 30 |
| World | 925 | 13 |

Notes: Data are projections; columns do not add to totals due to rounding.

Source: Compiled by Earth Policy Institute from U.N. Food and Agriculture Organization (FAO), "Global Hunger Declining, but Still Unacceptably High," policy brief (Rome: September 2010); share of population calculated using U.N. Population Division, *World Population Prospects: The 2008 Revision Population Database*, at <http://esa.un.unpp>, updated 11 March 2009.

This is part of a supporting dataset for Lester R. Brown, **World on the Edge: How to Prevent Environmental and Economic Collapse** (New York: W.W. Norton & Company, 2011). For more information and a free download of the book, see Earth Policy Institute on-line at www.earth-policy.org.

Countries Receiving World Food Programme Aid, October 2010

| Country/Territory | Emergency Operations ¹ | Protracted Relief and Recovery Operations ² | Member of Top 20 Failing States List |
|----------------------------------|-----------------------------------|--|--------------------------------------|
| Afghanistan | | X | X |
| Algeria | | X | |
| Armenia | | X | |
| Bangladesh | X | X | |
| Benin | X | | |
| Bhutan | | | |
| Bolivia | | X | |
| Burkina Faso | X | X | |
| Burma (Myanmar) | X | X | X |
| Burundi | | X | |
| Cambodia | | X | |
| Cameroon | X | | |
| Cape Verde | | | |
| Central African Republic | X | X | X |
| Chad | X | X | X |
| China | X | | |
| Colombia | X | X | |
| Côte D'Ivoire | | X | X |
| Cuba | X | | |
| Democratic Republic of the Congo | X | X | X |
| Djibouti | | X | |
| Dominican Republic | X | | |
| Ecuador | X | X | |
| Egypt | | | |
| El Salvador | | X | |
| Ethiopia | | X | X |
| Gambia | X | | |
| Georgia | | X | |
| Ghana | X | X | |
| Guatemala | X | X | |
| Guinea | X | X | X |
| Guinea-Bissau | | X | |
| Haiti | X | X | X |
| Honduras | | | |
| India | | | |
| Indonesia | | X | |
| Iran | | X | |
| Iraq | | X | X |
| Kenya | | X | X |
| Kyrgyzstan | X | | |
| Lao People's Democratic Republic | | X | |
| Lesotho | | X | |
| Liberia | | X | |
| Madagascar | | X | |
| Malawi | | X | |
| Mali | | X | |
| Mauritania | | X | |
| Mozambique | | X | |
| Namibia | | X | |
| Nepal | | X | |
| Nicaragua | | | |
| Niger | X | X | X |
| North Korea | X | X | X |
| Occupied Palestinian Territory | X | X | |
| Pakistan | X | X | X |
| Peru | | | |
| Philippines | X | X | |
| Republic of Congo | X | X | |
| Rwanda | | X | |

| | | | |
|-----------------------|----|----|----|
| Sao Tome and Principe | | | |
| Senegal | | X | |
| Sierra Leone | | X | |
| Somalia | X | | X |
| Sri Lanka | | X | |
| Sudan | X | | X |
| Swaziland | | X | |
| Syria | X | | |
| Tajikistan | | X | |
| Tanzania | X | X | |
| Timor-Leste | | X | X |
| Togo | X | | |
| Uganda | X | X | |
| Yemen | X | X | X |
| Zambia | | X | |
| Zimbabwe | | X | X |
| Total | 32 | 56 | 19 |

¹Emergency Operations (EMOPs): WFP carries out EMOPs in countries hit by sudden disasters such as floods; by more gradually-occurring disasters such as drought or crop failure; or by civil unrest, conflict, and/or displacement of large numbers of people. The typical duration for EMOPs is between three months and one year, but an EMOP can last up to two years.

²For situations in which communities will need more help to recover and to restore food security after the EMOP expires, WFP plans and implements a Protracted Relief and Recovery Operation (PRRO).

Source: Compiled by Earth Policy Institute from U.N. World Food Programme, "Operations," at www.wfp.org/operations, viewed 5 October 2010; Fund for Peace and *Foreign Policy*, "The Failed States Index," *Foreign Policy*, July/August 2010, pp. 74–105.

This is part of a supporting dataset for Lester R. Brown, **World on the Edge: How to Prevent Environmental and Economic Collapse** (New York: W.W. Norton & Company, 2011). For more information and a free download of the book, see Earth Policy Institute on-line at www.earth-policy.org.

Life Expectancy for the World and Selected Groups and Regions, 1950-2005, with Projection to 2050

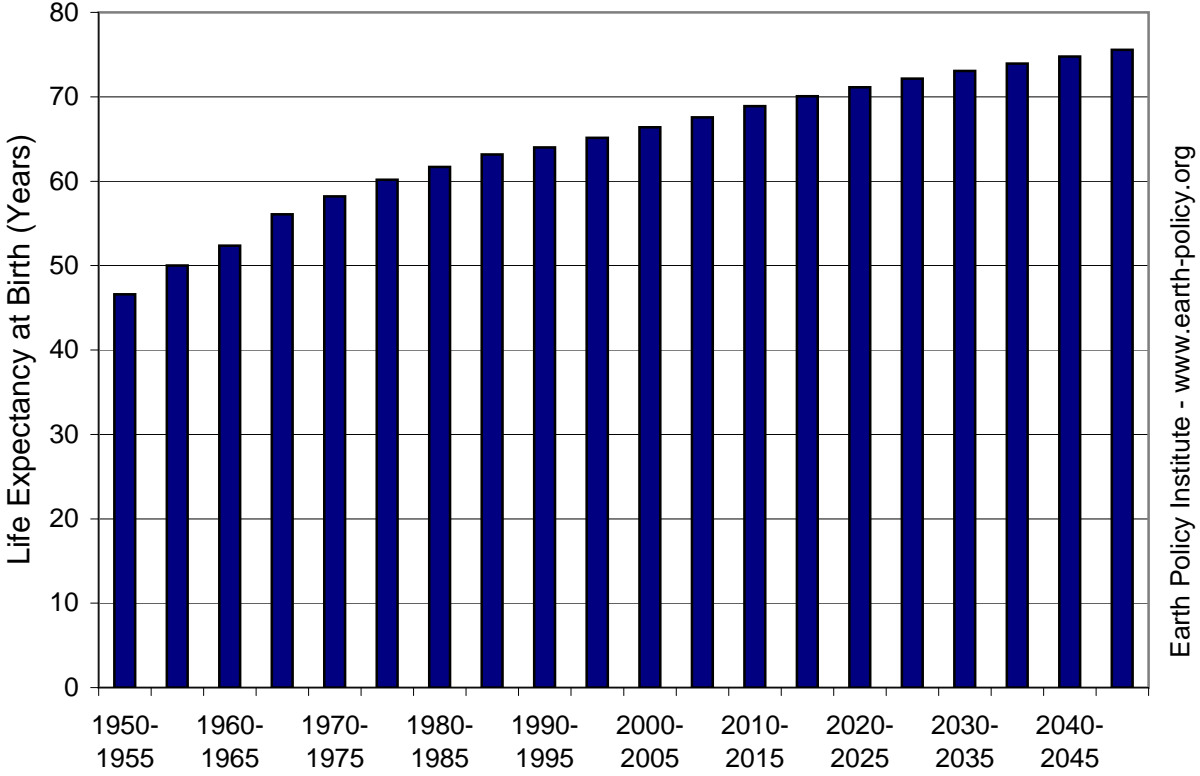
| Period | Africa | Sub-Saharan Africa | Asia | Europe | Latin America & the Caribbean | U.S. & Canada | Oceania | Top 20 Failing States* | World |
|-----------|--------|--------------------|------|--------|-------------------------------|---------------|---------|------------------------|-------|
| 1950-1955 | 39 | 38 | 41 | 66 | 51 | 69 | 60 | 38 | 47 |
| 1955-1960 | 41 | 40 | 44 | 68 | 54 | 70 | 62 | 40 | 50 |
| 1960-1965 | 43 | 42 | 48 | 70 | 57 | 71 | 64 | 42 | 52 |
| 1965-1970 | 44 | 43 | 54 | 70 | 59 | 71 | 65 | 45 | 56 |
| 1970-1975 | 46 | 45 | 57 | 71 | 61 | 72 | 66 | 47 | 58 |
| 1975-1980 | 49 | 47 | 59 | 71 | 63 | 74 | 68 | 49 | 60 |
| 1980-1985 | 50 | 48 | 61 | 72 | 65 | 75 | 70 | 51 | 62 |
| 1985-1990 | 51 | 49 | 63 | 73 | 67 | 76 | 71 | 52 | 63 |
| 1990-1995 | 52 | 49 | 64 | 73 | 69 | 77 | 72 | 53 | 64 |
| 1995-2000 | 52 | 49 | 66 | 73 | 71 | 78 | 73 | 53 | 65 |
| 2000-2005 | 53 | 50 | 68 | 74 | 72 | 79 | 75 | 54 | 66 |
| 2005-2010 | 54 | 52 | 69 | 75 | 73 | 80 | 76 | 55 | 68 |
| 2010-2015 | 56 | 54 | 70 | 76 | 74 | 81 | 77 | 58 | 69 |
| 2015-2020 | 58 | 56 | 72 | 77 | 76 | 81 | 78 | 60 | 70 |
| 2020-2025 | 60 | 57 | 73 | 78 | 76 | 82 | 79 | 61 | 71 |
| 2025-2030 | 61 | 59 | 74 | 79 | 77 | 82 | 80 | 63 | 72 |
| 2030-2035 | 63 | 61 | 74 | 80 | 78 | 83 | 80 | 65 | 73 |
| 2035-2040 | 64 | 63 | 75 | 80 | 79 | 83 | 81 | 66 | 74 |
| 2040-2045 | 66 | 64 | 76 | 81 | 79 | 84 | 82 | 68 | 75 |
| 2045-2050 | 67 | 66 | 77 | 82 | 80 | 84 | 82 | 69 | 76 |

* Note: The top 20 failing states, based on data from 2009, are Somalia, Chad, Sudan, Zimbabwe, the Democratic Republic of the Congo, Afghanistan, Iraq, the Central African Republic, Guinea, Pakistan, Haiti, Côte d'Ivoire, Kenya, Nigeria, Yemen, Burma, Ethiopia, East Timor, North Korea, and Niger.

Source: Compiled by Earth Policy Institute from U.N. Population Division, *World Population Prospects: The 2008 Revision Population Database*, at esa.un.org/unpp, updated 11 March 2009; top 20 failing states from Fund for Peace and *Foreign Policy*, "The Failed States Index," *Foreign Policy*, July/August 2010, pp. 76-79.

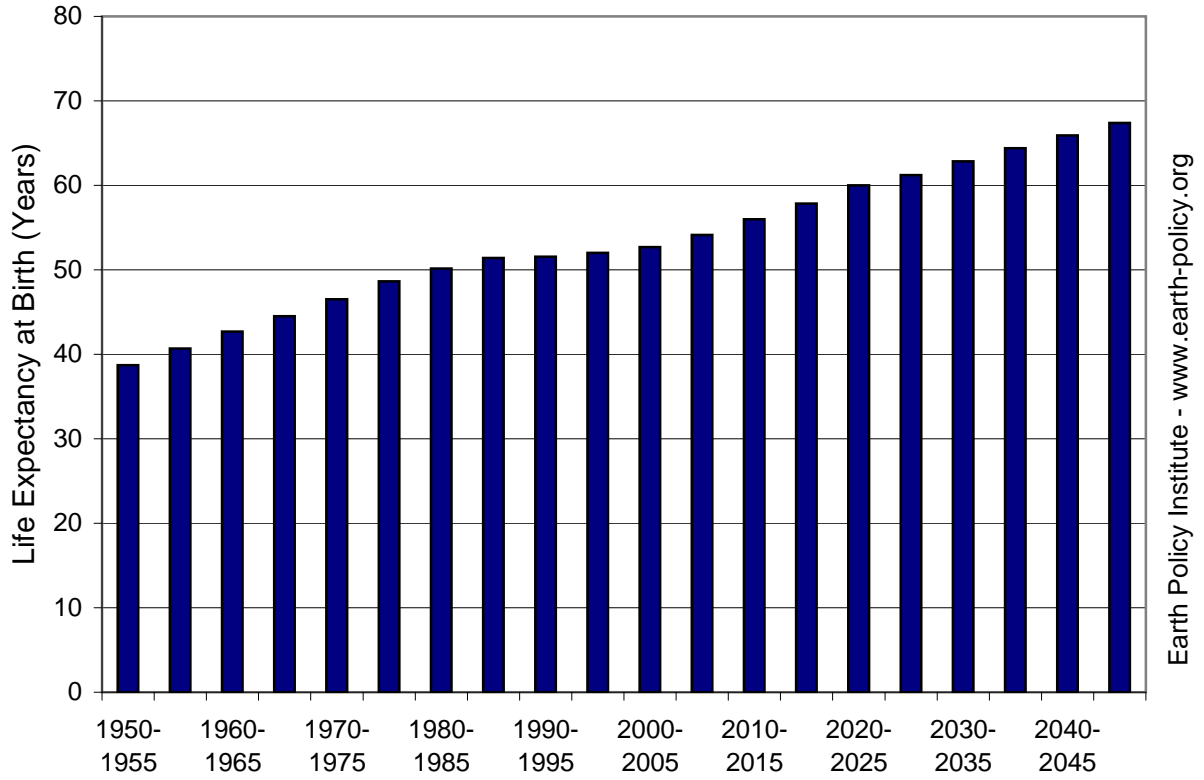
This is part of a supporting dataset for Lester R. Brown, **World on the Edge: How to Prevent Environmental and Economic Collapse** (New York: W.W. Norton & Company, 2011). For more information and a free download of the book, see Earth Policy Institute on-line at www.earth-policy.org.

Life Expectancy for the World, 1950-2005,
with Projection to 2050



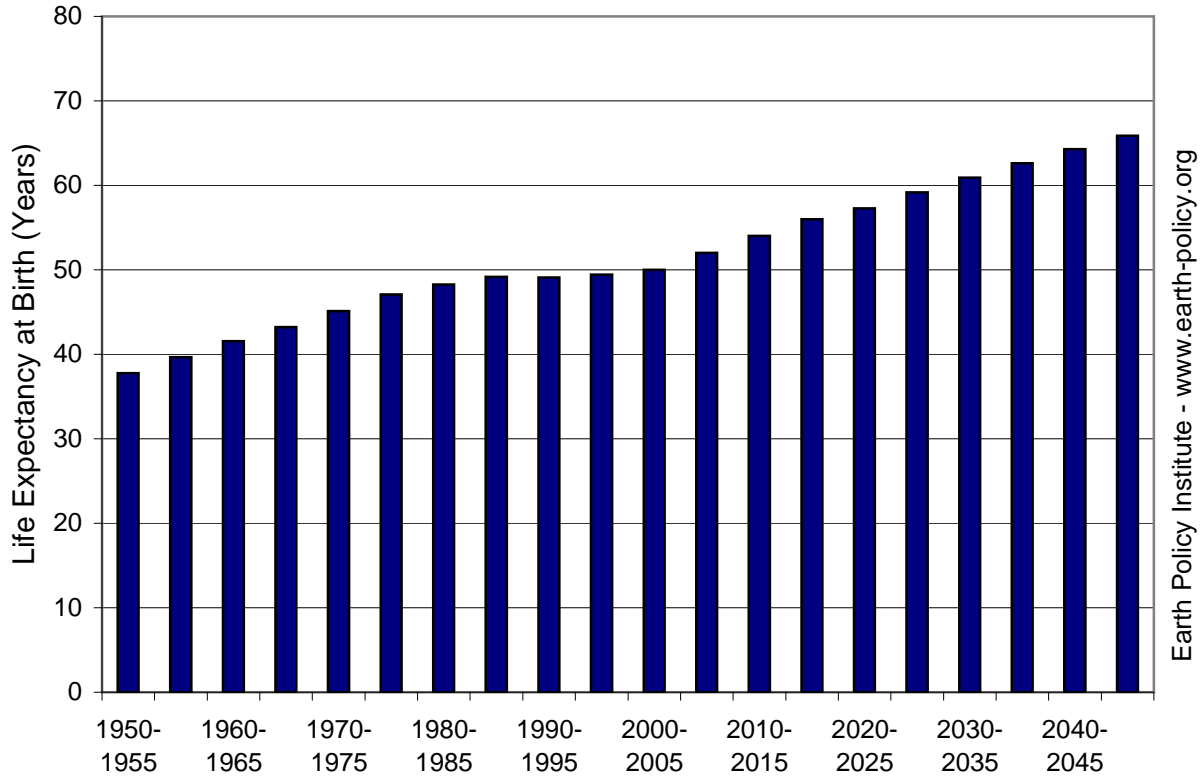
Source: UNPop

Life Expectancy for Africa, 1950-2005, with Projection to 2050



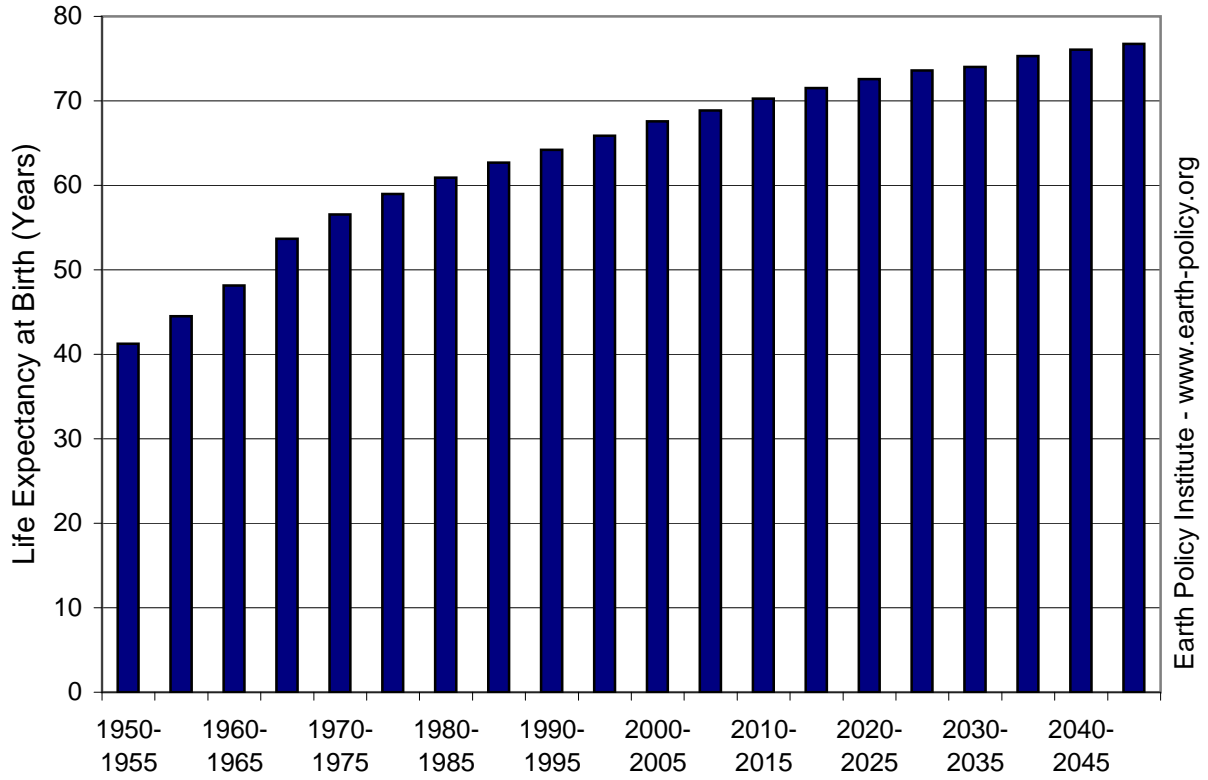
Source: UNPop

Life Expectancy for Sub-Saharan Africa, 1950-2005, with Projection to 2050



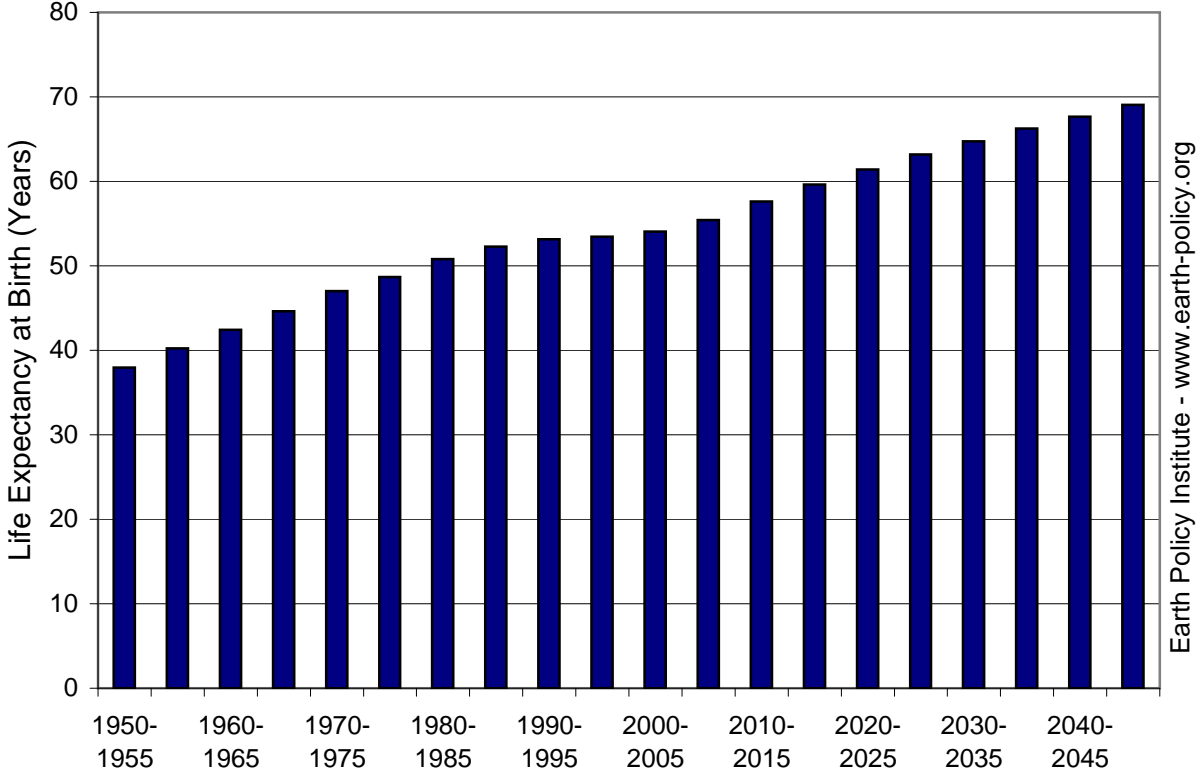
Source: UNPop

Life Expectancy for Asia, 1950-2005, with Projection to 2050



Source: UNPop

Life Expectancy for Top 20 Failing States, 1950-2005,
with Projection to 2050



Source: UNPop

Earth Policy Institute - www.earth-policy.org

Leading Causes of Death in the World, 2004

| Cause | World | High-income | Low- and |
|--|-------------|-------------|--------------------------------|
| | | countries | middle- income countries |
| Million Deaths | | | |
| Cardiovascular diseases | 17.1 | 3.0 | 14.0 |
| Infectious and parasitic diseases, <i>including:</i> | 9.5 | 0.2 | 9.3 |
| <i>Diarrhoeal diseases</i> | 2.2 | 0.0 | 2.1 |
| <i>HIV/AIDS</i> | 2.0 | 0.0 | 2.0 |
| <i>Tuberculosis</i> | 1.5 | 0.0 | 1.4 |
| <i>Malaria</i> | 0.9 | 0.0 | 0.9 |
| Cancers, <i>including:</i> | 7.6 | 2.2 | 5.4 |
| <i>Trachea/bronchus/lung</i> | 1.3 | 0.5 | 0.8 |
| Respiratory infections | 4.3 | 0.3 | 3.9 |
| Respiratory diseases | 4.0 | 0.5 | 3.6 |
| Unintentional injuries | 3.9 | 0.3 | 3.6 |
| Perinatal conditions | 3.2 | 0.0 | 3.1 |
| Digestive diseases | 2.0 | 0.3 | 1.7 |
| Intentional injuries | 1.6 | 0.2 | 1.5 |
| Neuropsychiatric conditions | 1.3 | 0.5 | 0.8 |
| Diabetes mellitus | 1.1 | 0.2 | 0.9 |
| Diseases of the genitourinary system | 0.9 | 0.2 | 0.8 |
| Maternal conditions | 0.5 | 0.0 | 0.5 |
| Nutritional deficiencies | 0.5 | 0.0 | 0.5 |
| All Causes | 58.8 | 8.1 | 50.6 |

Note: Sums do not always add to totals because WHO excludes some "residual populations" outside WHO member states from its income categories and because minor causes of death are omitted from list.

Source: Compiled by Earth Policy Institute from World Health Organization (WHO), "Mortality and Morbidity: Deaths - LMIC Countries by WHO Region," table for *The Global Burden of Disease: 2004 Update* (World Health Organization 2008), at www.who.int/healthinfo/global_burden_disease/estimates_regional/en/index.html.

This is part of a supporting dataset for Lester R. Brown, **World on the Edge: How to Prevent Environmental and Economic Collapse** (New York: W.W. Norton & Company, 2011). For more information and a free download of the book, see Earth Policy Institute on-line at www.earth-policy.org.

Leading Causes of Death in China: Urban Population, 1982-2008

| Year | Malignant Neoplasms (Cancer) | Cerebrovascular Diseases | Heart Diseases | Respiratory Diseases | Injury and Poisoning | Endocrine and Metabolic Diseases | Digestive Diseases | Genitourinary Diseases | Nervous System Diseases | Mental Disorders | Infectious Diseases | |
|---------------------------|------------------------------------|-----------------------------|-------------------|-------------------------|-------------------------|-------------------------------------|-----------------------|---------------------------|-------------------------------|---------------------|---------------------|-------|
| | | | | | | | | | | | Tuberculosis | Other |
| Deaths per 100,000 People | | | | | | | | | | | | |
| 1982 | 115.2 | 124.4 | 117.7 | 48.5 | 29.6 | - | 24.4 | 9.0 | - | - | 11.3 | - |
| 1983 | 114.2 | 118.6 | 119.3 | 49.4 | 30.8 | - | 24.3 | 9.0 | - | - | 10.8 | - |
| 1984 | 116.2 | 116.3 | 124.6 | 48.4 | 29.5 | - | 23.8 | 8.5 | - | - | 10.2 | 8.1 |
| 1985 | 113.9 | 117.5 | 131.0 | 50.9 | 32.5 | - | 23.3 | 9.1 | - | - | 10.2 | 7.9 |
| 1986 | 114.7 | 114.5 | 124.9 | 48.1 | 31.1 | - | 22.9 | 8.9 | - | - | 9.3 | - |
| 1987 | 132.0 | 125.9 | 92.8 | 91.8 | 46.5 | 9.0 | 27.4 | 10.1 | - | - | 9.8 | - |
| 1988 | 119.1 | 116.6 | 84.0 | 85.8 | 43.8 | 8.8 | 24.1 | 9.0 | - | - | - | 8.3 |
| 1989 | 124.9 | 122.0 | 91.9 | 93.0 | 43.3 | 8.7 | 22.9 | 9.1 | - | - | 7.6 | - |
| 1990 | 128.0 | 121.8 | 92.5 | 92.2 | 40.4 | 10.2 | 23.6 | 9.3 | - | - | 7.0 | - |
| 1991 | 123.9 | 116.5 | 82.4 | 84.2 | 39.9 | 10.1 | 22.5 | 8.7 | - | - | 6.4 | - |
| 1992 | 125.8 | 122.7 | 85.1 | 97.8 | 40.4 | 11.5 | 22.3 | 9.0 | - | 6.6 | - | - |
| 1993 | 126.5 | 124.2 | 85.6 | 99.2 | 38.8 | 12.1 | 21.6 | 9.1 | - | 6.9 | - | - |
| 1994 | 128.1 | 129.6 | 87.9 | 94.4 | 39.5 | 13.1 | 20.6 | 8.9 | 5.0 | 7.0 | - | - |
| 1995 | 128.6 | 130.5 | 90.1 | 92.5 | 40.6 | 13.8 | 19.5 | 9.2 | 5.1 | 7.2 | - | - |
| 1996 | 130.9 | 134.6 | 98.9 | 92.3 | 39.4 | 15.2 | 19.4 | 9.1 | 5.1 | 6.8 | - | - |
| 1997 | 135.4 | 134.9 | 100.0 | 84.0 | 36.8 | 15.8 | 36.8 | 8.9 | 5.8 | 6.9 | - | - |
| 1998 | 139.3 | 137.7 | 106.6 | 86.8 | 38.3 | 17.2 | 18.7 | 9.3 | 5.8 | 7.0 | - | - |
| 1999 | 140.5 | 127.2 | 98.9 | 81.7 | 37.0 | 16.9 | 17.9 | 8.9 | 5.3 | 6.7 | - | - |
| 2000 | 146.6 | 128.0 | 106.7 | 79.9 | 35.6 | 18.0 | 18.4 | 9.0 | 5.5 | 6.7 | - | - |
| 2001 | 135.6 | 111.0 | 95.8 | 72.6 | 31.9 | 17.2 | 17.1 | 8.6 | 5.2 | 5.4 | - | - |
| 2002 | 135.4 | 100.6 | 84.1 | 89.9 | 50.4 | 14.1 | 19.6 | 9.7 | 5.2 | - | - | - |
| 2003 | 134.5 | 105.4 | 76.2 | 77.3 | 32.6 | 14.1 | 19.3 | 7.1 | 4.8 | - | - | - |
| 2004 | 126.4 | 100.9 | 99.4 | 69.3 | 31.1 | 14.9 | 17.1 | 9.5 | 4.6 | - | - | - |
| 2005 | 126.0 | 116.6 | 98.2 | 69.0 | 45.3 | 13.8 | 18.1 | 8.6 | 4.6 | 5.2 | - | - |
| 2006 | 144.6 | 93.7 | 90.7 | 69.3 | 32.4 | 17.6 | 15.6 | 7.3 | 5.0 | 3.4 | - | - |
| 2007 | 176.2 | 115.5 | 100.6 | 80.9 | 37.6 | 20.4 | 17.5 | 7.9 | 5.9 | 5.4 | - | - |
| 2008 | 167.0 | 120.8 | 121.0 | 73.0 | 31.3 | 21.1 | 17.6 | 7.0 | 6.3 | 3.7 | - | - |

Notes:

"-" indicates data not available.

Perinatal diseases are excluded from this table.

Figures presented are those reported by Qin and Shi and the Chinese Ministry of Health. Jumps in data may not reflect actual trends.

Source: Compiled by Earth Policy Institute from Chinese Ministry of Health data cited in Qin Xue-jun and Shi Huan-zhong, "Major Causes of Death During the Past 25 Years in China," *Chinese Medical Journal*, vol. 120, no. 24 (2007), pp. 2,317-20, with updates from the Ministry of Health of the People's Republic of China, "Health Career Statistics Bulletins," at www.moh.gov.cn/publicfiles/business/htmlfiles/zwgkzt/pwstj/index.htm, viewed July 2010.

Leading Causes of Death in China: Rural Population, 1982-2008

| Year | Malignant Neoplasms (Cancer) | Cerebrovascular Diseases | Heart Diseases | Respiratory Diseases | Injury and Poisoning | Endocrine and Metabolic Diseases | Digestive Diseases | Genitourinary Diseases | Nervous System Diseases | Mental Disorders | Infectious Diseases | |
|---------------------------|------------------------------------|-----------------------------|-------------------|-------------------------|-------------------------|-------------------------------------|-----------------------|---------------------------|-------------------------------|---------------------|---------------------|-------|
| | | | | | | | | | | | Tuberculosis | Other |
| Deaths per 100,000 People | | | | | | | | | | | | |
| 1982 | 103.0 | 103.5 | 159.3 | 77.3 | 48.4 | - | 38.3 | - | - | - | 28.3 | 16.8 |
| 1983 | 100.6 | 100.5 | 161.0 | 81.7 | 49.4 | - | 37.9 | - | - | - | 30.3 | 18.5 |
| 1984 | 103.0 | 104.8 | 168.3 | 83.3 | 51.4 | - | 38.6 | - | - | - | 28.5 | 16.3 |
| 1985 | 98.8 | 101.3 | 165.8 | 79.7 | 46.8 | - | 35.5 | - | - | - | 24.2 | 14.0 |
| 1986 | 95.7 | 98.8 | 154.5 | 79.3 | 47.1 | - | 34.4 | 8.0 | - | - | 21.8 | - |
| 1987 | 97.5 | 101.9 | 89.7 | 143.1 | 70.5 | - | 34.5 | 8.1 | - | - | 20.2 | 14.3 |
| 1988 | 95.0 | 100.9 | 74.3 | 162.6 | 74.8 | - | 34.4 | 8.3 | - | - | 18.7 | 16.8 |
| 1989 | 97.7 | 99.0 | 76.9 | 159.0 | 74.8 | - | 32.8 | 8.4 | - | - | 17.3 | 13.7 |
| 1990 | 112.4 | 103.9 | 69.6 | 169.7 | 68.5 | - | 32.2 | 9.5 | - | - | 11.9 | 11.2 |
| 1991 | 101.4 | 97.5 | 67.5 | 157.1 | 75.8 | - | 33.6 | 8.9 | - | - | 14.2 | 11.2 |
| 1992 | 102.5 | 103.8 | 64.7 | 168.3 | 68.9 | - | 30.6 | 8.1 | - | - | 11.6 | 9.1 |
| 1993 | 102.2 | 98.2 | 62.7 | 165.6 | 71.6 | - | 31.2 | 8.4 | - | - | 11.8 | 8.8 |
| 1994 | 105.5 | 104.5 | 66.6 | 161.6 | 76.7 | - | 30.9 | 8.4 | - | - | 11.4 | 9.2 |
| 1995 | 111.4 | 108.1 | 62.0 | 169.4 | 72.7 | - | 30.2 | 8.5 | - | - | 10.2 | 8.2 |
| 1996 | 104.6 | 110.9 | 69.1 | 161.1 | 71.2 | - | 28.7 | 9.4 | - | - | 8.7 | 8.9 |
| 1997 | 82.1 | 105.5 | 73.7 | 143.4 | 60.4 | 7.3 | 22.9 | 7.6 | - | - | - | 7.2 |
| 1998 | 105.6 | 113.1 | 80.0 | 142.1 | 69.2 | - | 24.8 | 9.2 | - | - | 8.5 | 6.5 |
| 1999 | 111.6 | 111.6 | 75.0 | 133.7 | 66.9 | 6.4 | 24.2 | 9.2 | - | - | 7.9 | - |
| 2000 | 112.6 | 115.2 | 73.4 | 142.2 | 64.9 | 6.8 | 23.9 | 9.3 | - | - | 7.4 | - |
| 2001 | 105.4 | 112.6 | 77.7 | 133.4 | 63.7 | 6.6 | 24.1 | 9.1 | - | - | 7.4 | - |
| 2002 | 84.3 | 70.6 | 58.5 | 63.8 | 41.5 | 4.9 | 14.5 | 5.9 | - | - | 4.3 | - |
| 2003 | 95.7 | 89.9 | 45.5 | 70.9 | 21.5 | 10.5 | 14.5 | 7.2 | - | - | 4.2 | - |
| 2004 | 119.7 | 74.9 | 63.4 | 67.2 | 33.5 | 12.7 | 14.2 | 8.1 | - | - | 3.3 | - |
| 2005 | 107.1 | 111.7 | 62.1 | 123.8 | 44.7 | 7.0 | 17.1 | 6.2 | 2.3 | 2.9 | - | - |
| 2006 | 130.2 | 105.5 | 71.8 | 84.9 | 46.1 | 8.2 | 17.0 | 6.7 | 4.2 | 3.8 | - | - |
| 2007 | 144.2 | 119.7 | 86.0 | 100.2 | 52.1 | 8.8 | 15.6 | 7.1 | 4.5 | 3.5 | - | - |
| 2008 | 156.7 | 134.2 | 87.1 | 104.2 | 53.0 | 11.1 | 16.3 | 5.7 | 4.4 | 4.3 | - | - |

Notes:

"-" indicates data not available.

Perinatal diseases are excluded from this table.

Figures presented are those reported by Qin and Shi and the Chinese Ministry of Health. Jumps in data may not reflect actual trends.

Source: Compiled by Earth Policy Institute from Chinese Ministry of Health data cited in Qin Xue-jun and Shi Huan-zhong, "Major Causes of Death During the Past 25 Years in China," *Chinese Medical Journal*, vol. 120, no. 24 (2007), pp. 2,317-20, with updates from the Ministry of Health of the People's Republic of China, "Health Career Statistics Bulletins," at www.moh.gov.cn/publicfiles/business/htmlfiles/zwgkzt/pwstj/index.htm, viewed July 2010.

Global Wild Poliovirus Cases, 1985-2010

| Year | Estimated and Reported Cases* |
|------|-------------------------------|
| 1985 | 387,000 |
| 1986 | 323,000 |
| 1987 | 394,000 |
| 1988 | 345,000 |
| 1989 | 261,000 |
| 1990 | 233,000 |
| 1991 | 134,000 |
| 1992 | 137,000 |
| 1993 | 76,000 |
| 1994 | 73,000 |
| 1995 | 60,000 |
| 1996 | 33,000 |
| 1997 | 18,000 |
| 1998 | 10,000 |
| 1999 | 10,000 |
| 2000 | 719 |
| 2001 | 483 |
| 2002 | 1,918 |
| 2003 | 784 |
| 2004 | 1,255 |
| 2005 | 1,979 |
| 2006 | 1,997 |
| 2007 | 1,315 |
| 2008 | 1,651 |
| 2009 | 1,604 |
| 2010 | 920 |

* Note: Cases prior to 2000 are largely comprised of estimates because disease surveillance was not sufficiently sensitive to provide a precise number of cases.

Source: Compiled by Earth Policy Institute with 1985-1999 from Oliver Rosenbauer, World Health Organization (WHO), "Progress in Polio Eradication, Estimated and Reported Polio Cases, 1985-2006," September 2007; 2000-2010 from "Wild Poliovirus List 2000-2010," in WHO Global Polio Eradication Initiative, "Polio This Week," at www.polioeradication.org, updated 5 January 2011.

Global Wild Poliovirus Cases, 1985-2010

