

The Great Transition: Shifting from Fossil Fuels to Solar and Wind Energy Supporting Data - Transportation

[Countries with Bike-Sharing Programs, 2015](#)

[Bicycle Sales in the United States, 1981-2013](#)

[New Passenger Car Registrations and Bicycle Sales in Europe, 1997-2014](#)

[New Passenger Car Registrations in Europe, 1997-2014](#)

[Passenger Car and Total Vehicle Sales in Japan, 1955-2013](#)

GRAPH: Total Vehicle Sales in Japan, 1955-2013

[U.S. Vehicle Registrations and Scrappage, 2001-2013](#)

GRAPH: Total Vehicles in Use in the United States, 2001-2013

[U.S. Vehicle Sales, 1931-2014](#)

GRAPH: U.S. Vehicle Sales, 1931-2014

[Monthly U.S. Sales of Leading Plug-in Electric Vehicles, December 2010 - February 2015](#)

[Number of Drivers in the United States, 1960-2011](#)

GRAPH: Number of Drivers in the United States, 1960-2011

[Teen Drivers in the United States, Total and Share of Teen Population, 1963-2012](#)

GRAPH: Number of Teen Drivers in the United States, 1963-2012

GRAPH: Teen Drivers as a Share of Teen Population in the United States, 1963-2012

[Miles Traveled by Cars, Trucks, and Motorcycles in the United States, 1960-2012](#)

GRAPH: Miles Traveled by Cars, Trucks, and Motorcycles in the United States, 1990-2012

[Average U.S. Retail Fuel Prices](#)

[U.S. Motor Gasoline Consumption, 1950-2014](#)

GRAPH: U.S. Motor Gasoline Consumption, 1950-2014

[Motor Vehicles and Cars Per Person by Country, 2011](#)

GRAPH: Motor Vehicles Per Person in Leading Countries, 2011

[Motor Vehicles and Cars Per Person in Key Countries, 2011](#)

GRAPH: Motor Vehicles and Cars Per Person in Key Countries, 2011

A full listing of data for the entire book is on-line at:

http://www.earth-policy.org/books/tgt/tgt_data

This is part of a supporting dataset for **The Great Transition: Shifting from Fossil Fuels to Solar and Wind Energy**, by Lester R. Brown, with Janet Larsen, J. Matthew Roney, and Emily E. Adams (New York: W.W. Norton & Company, 2015).

For more information, see Earth Policy Institute on-line at www.earth-policy.org.

Countries with Bike-Sharing Programs, 2015

Country	Number of Programs	Bike Fleet
China	274	858,000
France	39	43,030
Spain	127	27,670
United States	48	23,210
Germany	44	17,250
Italy	137	14,960
United Kingdom	13	12,330
Taiwan	6	11,380
South Korea	6	8,700
Mexico	3	7,490
Canada	7	7,190
Belgium	3	5,690
Poland	13	5,580
Netherlands	3	5,080
Austria	9	3,310
Russia	3	2,770
Sweden	3	2,710
Japan	11	2,650
Australia	2	2,600
Israel	1	2,000
Ireland	4	1,940
Norway	4	1,760
Brazil	11	1,660
Switzerland	27	1,630
Argentina	2	1,340
Hungary	4	1,210
Romania	4	1,140
Denmark	6	1,040
Chile	5	1,000
Portugal	6	920
Luxembourg	3	900
Turkey	5	900
Greece	12	740
Thailand	1	500
Cyprus	2	490
Iran	1	480
United Arab Emirates	4	430
Ecuador	1	430
Lithuania	1	300
Slovenia	1	300
Croatia	3	200
Kazakhstan	1	200
Latvia	2	200
Colombia	1	160
India	3	120
Georgia	1	120
Singapore	2	100
Azerbaijan	1	100
Indonesia	1	90
Uruguay	1	80
Albania	1	80
Serbia	1	50
Bulgaria	1	40
Czech Republic	1	20
Monaco	1	10
New Zealand	1	10

Source: Earth Policy Institute research, based on: communication with bike share program operators; media reports; Peter Midgley, Urban Transport Advisor, email to Janet Larsen, Earth Policy Institute, March 2013; Russell Meddin and Paul DeMaio, *The Bike-sharing World Map*, at bike-sharing.blogspot.com; Yang Tang, Haixiao Pan, and Kathy, Qiaoyin Lu, "The Evolution and Lessons from China Mainland Bike-sharing Systems," paper for the Transportation Research Board 92nd Annual Meeting, 15 November 2012, 22 pp.; and Susan A. Shaheen, Stacey Guzman, and Hua Zhang, "Bikesharing Across the Globe," in John Pucher and Ralph Buehler, eds., *City Cycling* (Cambridge, MA: MIT Press, 2012), pp. 183-210.

Bicycle Sales in the United States, 1981-2013

Year	Under 20 inches	Wheel sizes	All
		20 inches and over	
Million			
1981	n.a.	8.9	n.a.
1982	n.a.	6.8	n.a.
1983	n.a.	9.0	n.a.
1984	n.a.	10.1	n.a.
1985	n.a.	11.4	n.a.
1986	n.a.	12.3	n.a.
1987	n.a.	12.6	n.a.
1988	n.a.	9.9	n.a.
1989	n.a.	10.7	n.a.
1990	n.a.	10.8	n.a.
1991	n.a.	11.6	n.a.
1992	3.7	11.6	15.3
1993	3.8	13.0	16.8
1994	4.2	12.5	16.7
1995	4.1	12.0	16.1
1996	4.5	10.9	15.4
1997	4.2	11.0	15.2
1998	4.7	11.1	15.8
1999	5.9	11.6	17.5
2000	9.0	11.9	20.9
2001	5.4	11.3	16.7
2002	5.9	13.6	19.5
2003	5.6	12.9	18.5
2004	5.3	13.0	18.3
2005	5.8	14.0	19.8
2006	5.5	12.7	18.2
2007	5.4	12.8	18.2
2008	5.1	13.4	18.5
2009	4.7	10.2	14.9
2010	6.3	13.5	19.8
2011	4.7	11.0	15.7
2012	5.7	13.0	18.7
2013	4.9	11.3	16.2

Note: "n.a." indicates data not available.

Source: "Bicycle Sales, 1981-2012," Table in Stacy C. Davis, Susan W. Diegel, and Robert G. Boundy, *Transportation Energy Data Book: Edition 33* (Oak Ridge, TN: Oak Ridge National Laboratory, Department of Energy, 2014) with 2013 data from National Bicycle Dealers Association, "A Look at the Bicycle Industry's Vital Statistics," at <http://nbda.com/articles/industry-overview-2013-pg34.htm>.

New Passenger Car Registrations and Bicycle Sales in Europe, 1997-2014

Year	Vehicle Registrations	Bicycle Sales
	Thousand	
1997	13,005	n.a.
1998	13,941	n.a.
1999	14,633	n.a.
2000	14,319	18,945
2001	14,402	17,745
2002	14,008	17,840
2003	13,843	20,206
2004	14,127	20,322
2005	14,112	20,912
2006	14,367	21,033
2007	14,364	21,344
2008	14,332	20,206
2009	14,158	19,582
2010	13,373	20,461
2011	13,148	20,039
2012	12,052	19,719
2013	11,873	19,780
2014	12,542	n.a.

Note: Vehicle registrations for 1997-2007 are for EU15. Vehicle registrations for 2008-2012 are for EU27.

Data for Cyprus and Malta not available.

EU15 = Austria, Belgium, Denmark, Finland, France, Germany, Greece, Ireland, Italy, Luxembourg, Netherlands, Portugal, Spain, Sweden, UK.

EU25 = EU15 + the Czech Republic, Estonia, Hungary, Latvia, Lithuania, Poland, Slovakia, Slovenia.

EU27 = EU25 + Bulgaria, Romania.

Source: Compiled by Earth Policy Institute from European Automobile Manufacturers' Association, at <http://www.acea.be/statistics/tag/category/by-country-registrations>, accessed 19 March 2015; and from Association of the European Bicycle Industry (COLIBI) and Association of the European Two-Wheeler Parts' and Accessories' Industry (COLIPED), *European Bicycle Market 2014 Edition* (Brussels: 2014).

New Passenger Car Registrations in Europe, 1997-2014

Year	1997	1998	1999	2000	2001	2002	2003	2004	2005	2006	2007	2008	2009	2010	2011	2012	2013	2014
	Thousand																	
Austria	275	296	314	309	294	279	300	311	308	309	298	294	319	329	356	336	319	303
Belgium	396	452	490	515	489	468	459	485	480	526	525	536	476	547	572	487	486	483
Bulgaria	n.a.	n.a.	n.a.	n.a.	n.a.	n.a.	n.a.	n.a.	n.a.	32	41	44	25	16	19	21	21	21
Czech Republic	n.a.	n.a.	n.a.	n.a.	n.a.	n.a.	153	144	152	157	174	183	168	170	174	174	165	192
Denmark	152	163	144	113	96	112	96	121	147	154	159	150	112	154	170	171	182	189
Estonia	n.a.	n.a.	n.a.	n.a.	n.a.	n.a.	16	16	20	25	31	25	10	10	17	19	20	21
Finland	105	126	136	135	109	117	147	142	148	146	125	140	88	107	121	111	103	106
France	1,713	1,944	2,148	2,134	2,255	2,145	2,009	2,014	2,068	2,001	2,065	2,050	2,302	2,252	2,204	1,899	1,790	1,796
Germany	3,528	3,736	3,802	3,378	3,342	3,253	3,237	3,267	3,319	3,468	3,148	3,090	3,807	2,916	3,174	3,083	2,952	3,037
Greece	160	180	262	290	280	268	257	290	270	268	280	267	220	142	98	58	59	71
Hungary	n.a.	n.a.	n.a.	n.a.	n.a.	n.a.	208	207	199	188	172	153	60	43	45	53	56	67
Ireland	137	146	174	231	165	156	145	154	172	178	186	152	57	88	90	80	74	96
Italy	2,404	2,379	2,338	2,423	2,413	2,280	2,247	2,265	2,237	2,326	2,493	2,162	2,159	1,962	1,750	1,403	1,305	1,360
Latvia	n.a.	n.a.	n.a.	n.a.	n.a.	n.a.	9	11	17	26	33	20	5	6	11	11	11	12
Lithuania	n.a.	n.a.	n.a.	n.a.	n.a.	n.a.	8	9	10	14	22	22	8	8	13	12	12	14
Luxembourg	31	36	40	42	43	43	44	48	49	51	51	52	47	50	50	47	50	50
Netherlands	478	543	611	598	530	511	489	484	465	484	506	500	387	483	556	502	417	388
Poland	n.a.	n.a.	n.a.	n.a.	n.a.	n.a.	358	318	236	239	293	320	320	333	298	271	289	325
Portugal	214	248	273	258	255	226	190	198	206	195	202	213	161	223	153	95	106	143
Romania	n.a.	n.a.	n.a.	n.a.	n.a.	n.a.	n.a.	n.a.	n.a.	256	316	271	130	106	95	72	58	70
Slovakia	n.a.	n.a.	n.a.	n.a.	n.a.	n.a.	60	57	57	59	60	70	75	64	68	69	66	72
Slovenia	n.a.	n.a.	n.a.	n.a.	n.a.	n.a.	60	62	59	60	69	72	58	61	60	50	52	54
Spain	1,016	1,193	1,406	1,381	1,426	1,332	1,382	1,517	1,529	1,635	1,615	1,161	953	982	808	700	723	855
Sweden	225	253	295	291	247	255	261	264	274	283	307	254	213	290	305	280	270	304
United Kingdom	2,171	2,247	2,198	2,222	2,459	2,564	2,579	2,567	2,440	2,345	2,404	2,132	1,995	2,031	1,941	2,045	2,265	2,476
Iceland	10	14	15	14	7	7	10	12	18	17	16	9	2	3	5	8	7	10
Norway	128	118	101	97	92	89	90	116	110	109	129	111	99	128	138	138	142	144
Switzerland	297	273	317	317	317	295	270	269	265	269	285	289	266	292	317	326	306	300

Notes: Data for Romania refers to sales. Data for Cyprus and Malta not available. "n.a." indicates data not available.

Source: Compiled by Earth Policy Institute from European Automobile Manufacturers' Association, at www.acea.be/statistics/tag/category/by-country-registrations, accessed 19 March 2015.

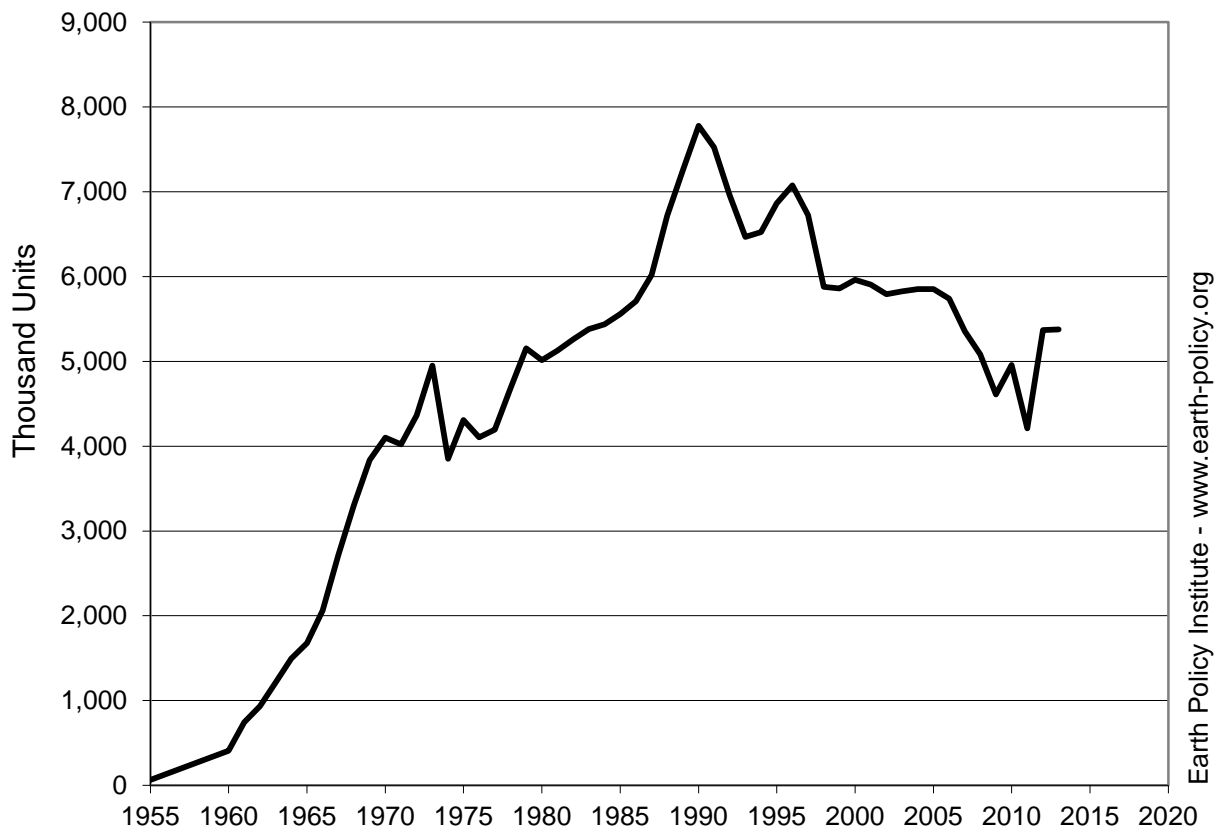
Passenger Car and Total Vehicle Sales in Japan, 1955-2013

Year	Passenger Cars	Total Vehicles
	Thousand	
1955	20	65
1960	145	408
1961	229	743
1962	259	933
1963	371	1,211
1964	494	1,494
1965	586	1,675
1966	740	2,060
1967	1,131	2,715
1968	1,569	3,309
1969	2,037	3,835
1970	2,379	4,100
1971	2,403	4,021
1972	2,627	4,367
1973	2,953	4,949
1974	2,287	3,850
1975	2,738	4,309
1976	2,449	4,104
1977	2,500	4,194
1978	2,857	4,682
1979	3,037	5,154
1980	2,854	5,016
1981	2,867	5,127
1982	3,038	5,261
1983	3,136	5,382
1984	3,096	5,437
1985	3,104	5,557
1986	3,146	5,708
1987	3,275	6,018
1988	3,717	6,721
1989	4,404	7,257
1990	5,103	7,777
1991	4,868	7,525
1992	4,454	6,959
1993	4,199	6,467
1994	4,210	6,527
1995	4,444	6,865
1996	4,669	7,078
1997	4,492	6,725
1998	4,093	5,879
1999	4,154	5,861
2000	4,260	5,963
2001	4,290	5,906
2002	4,441	5,792
2003	4,716	5,828
2004	4,768	5,853
2005	4,748	5,852
2006	4,642	5,740
2007	4,400	5,354
2008	4,228	5,082
2009	3,924	4,609
2010	4,212	4,956
2011	3,525	4,210
2012	4,572	5,370
2013	4,562	5,376

Note: Total Vehicles include cars, trucks, and buses.

Source: Compiled by Earth Policy Institute from Japan Automobile Manufacturers Association, Inc. (JAMA), *Motor Vehicle Statistics of Japan 2014* (Tokyo: 2014), p. 8.

Total Vehicle Sales in Japan, 1955-2013



Source: JAMA

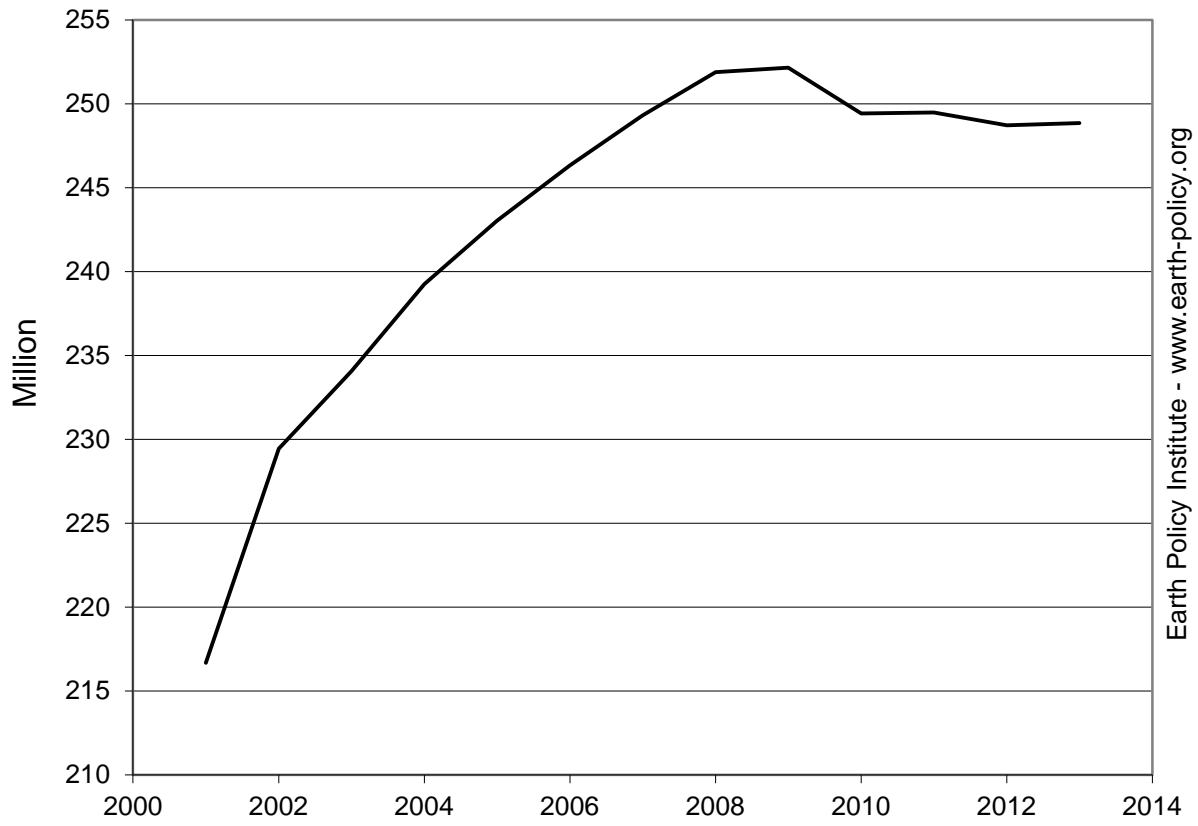
Earth Policy Institute - www.earth-policy.org

U.S. Vehicle Registrations and Scrappage, 2001-2013

Year	Total Vehicles in Use	New Vehicle Registrations Million	Scrappage	Scrappage Share of Registrations Percent
2001	217	17.5	14.1	80.7
2002	229	16.7	12.1	72.4
2003	234	16.6	12.4	74.9
2004	239	16.9	13.1	77.5
2005	243	16.8	13.5	80.3
2006	246	16.6	13.6	82.0
2007	249	16.0	13.4	83.9
2008	252	13.2	13.0	98.0
2009	252	10.4	13.1	126.3
2010	249	11.5	11.4	99.6
2011	249	12.7	13.4	106.0
2012	249	14.3	14.2	99.1
2013	249	15.4	11.6	75.6

Source: Compiled by Earth Policy Institute with 2001 from R.L. Polk & Company data cited in National Automobile Dealers Association, *NADA DATA 2012* (McLean, VA: 2012), p.16; 2002-2003 from R.L. Polk & Company data cited in National Automobile Dealers Association, *NADA DATA 2013* (McLean, VA: 2013), p.16; and 2004-2013 from IHS Automotive cited in National Automobile Dealers Association, *NADA DATA 2014* (McLean, VA: 2014), p.16.

Total Vehicles in Use in the United States, 2001-2013



Source: NADA

Earth Policy Institute - www.earth-policy.org

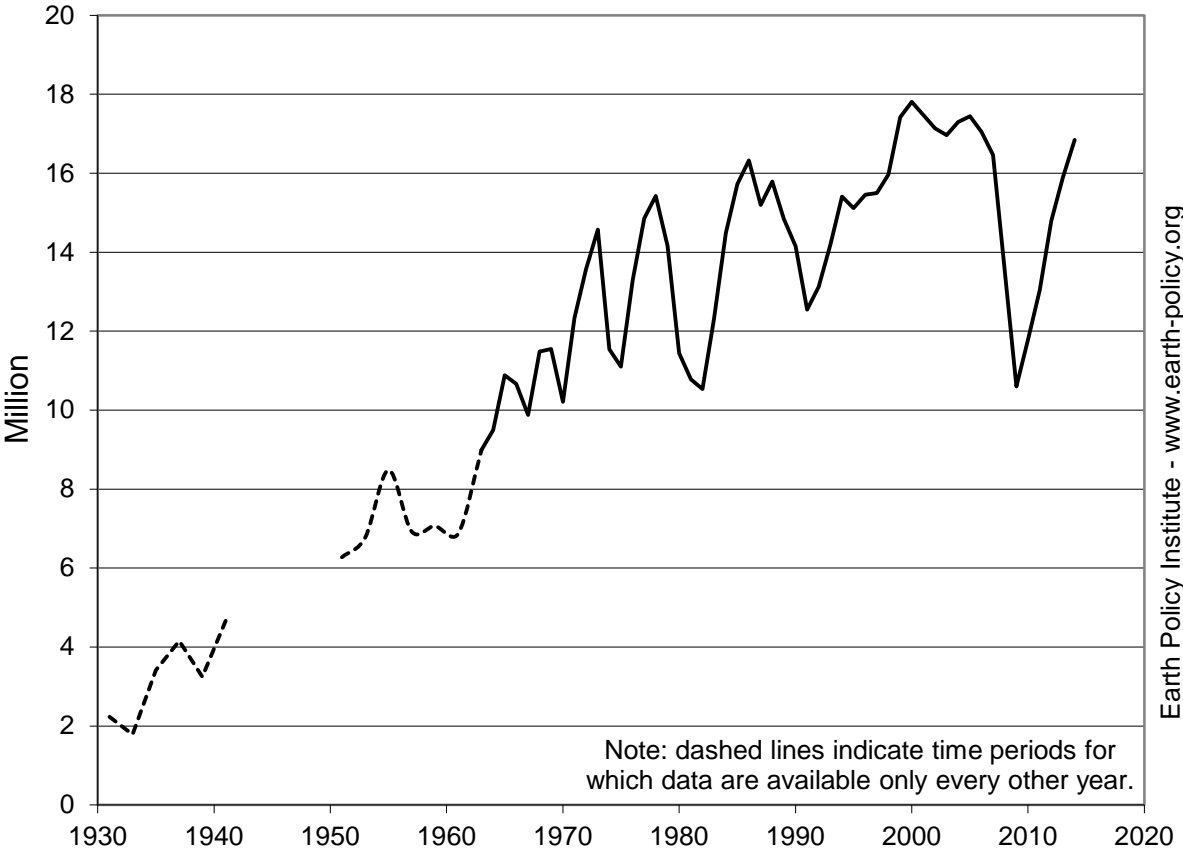
U.S. Vehicle Sales, 1931-2014

Year	Vehicle Sales Million
1931	2.2
1933	1.8
1935	3.4
1937	4.2
1939	3.2
1941	4.7
...	...
1951	6.3
1953	6.8
1955	8.5
1957	6.9
1959	7.1
1961	6.9
1963	9.0
1964	9.5
1965	10.9
1966	10.7
1967	9.9
1968	11.5
1969	11.6
1970	10.2
1971	12.3
1972	13.6
1973	14.6
1974	11.5
1975	11.1
1976	13.3
1977	14.9
1978	15.4
1979	14.2
1980	11.4
1981	10.8
1982	10.5
1983	12.3
1984	14.5
1985	15.7
1986	16.3
1987	15.2
1988	15.8
1989	14.8
1990	14.1
1991	12.5
1992	13.1
1993	14.2
1994	15.4
1995	15.1
1996	15.5
1997	15.5
1998	16.0
1999	17.4
2000	17.8
2001	17.5
2002	17.1
2003	17.0
2004	17.3
2005	17.4
2006	17.0
2007	16.5
2008	13.5
2009	10.6
2010	11.8
2011	13.0
2012	14.8
2013	15.9
2014	16.8

Note: 1942-1950 data unavailable.

Source: Ward's Automotive Group, "U.S. Car and Truck Sales, 1931-2014," at wardsauto.com/public-data, updated 19 January 2015.

U.S. Vehicle Sales, 1931-2014



Note: dashed lines indicate time periods for which data are available only every other year.

Source: Ward's

Earth Policy Institute - www.earth-policy.org

Monthly U.S. Sales of Leading Plug-in Electric Vehicles, December 2010 - February 2015

Month	Chevrolet Volt	Nissan LEAF	Toyota Prius Plug-in	Tesla Model S	Ford C-MAX Energi	Ford Fusion Energi	BMW i3	All U.S. PEVs
Total Sales								
Dec-10	326	19						345
Jan-11	321	87						408
Feb-11	281	67						348
Mar-11	608	298						906
Apr-11	493	573						1,066
May-11	481	1,142						1,631
Jun-11	561	1,708						2,269
Jul-11	125	931						1,057
Aug-11	302	1,362						1,665
Sep-11	723	1,031						1,754
Oct-11	1,108	849						1,974
Nov-11	1,139	672						1,912
Dec-11	1,529	954						2,741
Jan-12	603	676						1,427
Feb-12	1,023	478						1,662
Mar-12	2,289	579	911					4,161
Apr-12	1,462	370	1,654					3,891
May-12	1,680	510	1,086					3,378
Jun-12	1,760	535	695					3,318
Jul-12	1,849	395	688					3,016
Aug-12	2,831	685	1,047	71				4,715
Sep-12	2,851	984	1,652	150				5,809
Oct-12	2,961	1,579	1,889	250	144			7,032
Nov-12	1,519	1,539	1,766	800	1,259			7,156
Dec-12	2,633	1,489	1,361	900	971			7,669
Jan-13	1,140	650	874	1,000	338			4,376
Feb-13	1,626	653	693	1,400	334	119		5,405
Mar-13	1,478	2,236	786	1,950	494	295		7,632
Apr-13	1,306	1,937	599	2,100	411	364		7,138
May-13	1,607	2,138	678	2,000	450	416		7,754
Jun-13	2,698	2,225	584	1,800	455	390		8,742
Jul-13	1,788	1,864	817	1,550	433	407		7,442
Aug-13	3,351	2,420	1,791	1,700	621	600		11,363
Sep-13	1,766	1,953	1,152	1,100	758	750		8,127
Oct-13	2,022	2,002	2,095	1,300	1,092	1,087		10,100
Nov-13	1,920	2,003	1,100	1,400	941	870		8,833
Dec-13	2,392	2,529	919	1,700	827	791		9,790
Jan-14	918	1,252	803	1,300	471	533		5,905
Feb-14	1,210	1,425	1,041	1,400	552	779		7,045
Mar-14	1,478	2,507	1,452	1,300	610	899		9,172
Apr-14	1,548	2,088	1,741	1,400	525	743		8,905
May-14	1,684	3,117	2,692	1,400	782	1,342	336	12,453
Jun-14	1,777	2,347	1,571	1,400	988	1,939	358	11,493
Jul-14	2,020	3,019	1,371	1,400	831	1,226	363	11,433
Aug-14	2,511	3,186	818	1,200	1,050	1,222	1,025	12,403
Sep-14	1,394	2,881	353	1,300	677	640	1,022	9,340
Oct-14	1,439	2,589	479	1,300	644	686	1,159	9,553
Nov-14	1,336	2,687	451	1,450	644	752	816	9,785
Dec-14	1,490	3,102	492	1,900	659	789	1,013	11,286
Jan-15	542	1,070	401	1,300	395	426	670	6,090
Feb-15	693	1,198	397	1,400	498	603	1,089	7,024
Cumulative Sales, Dec-10 through Feb-15								
	74,592	74,590	38,899	40,621	18,854	18,668	7,851	299,899

Note: Plug-in electric vehicles (PEVs) include plug-in hybrid electric vehicles, but do not include Neighborhood Electric Vehicles, Low Speed Electric Vehicles, or two-wheeled electric vehicles. Only full-sized vehicles sold in the U.S. and capable of 60mph are listed.

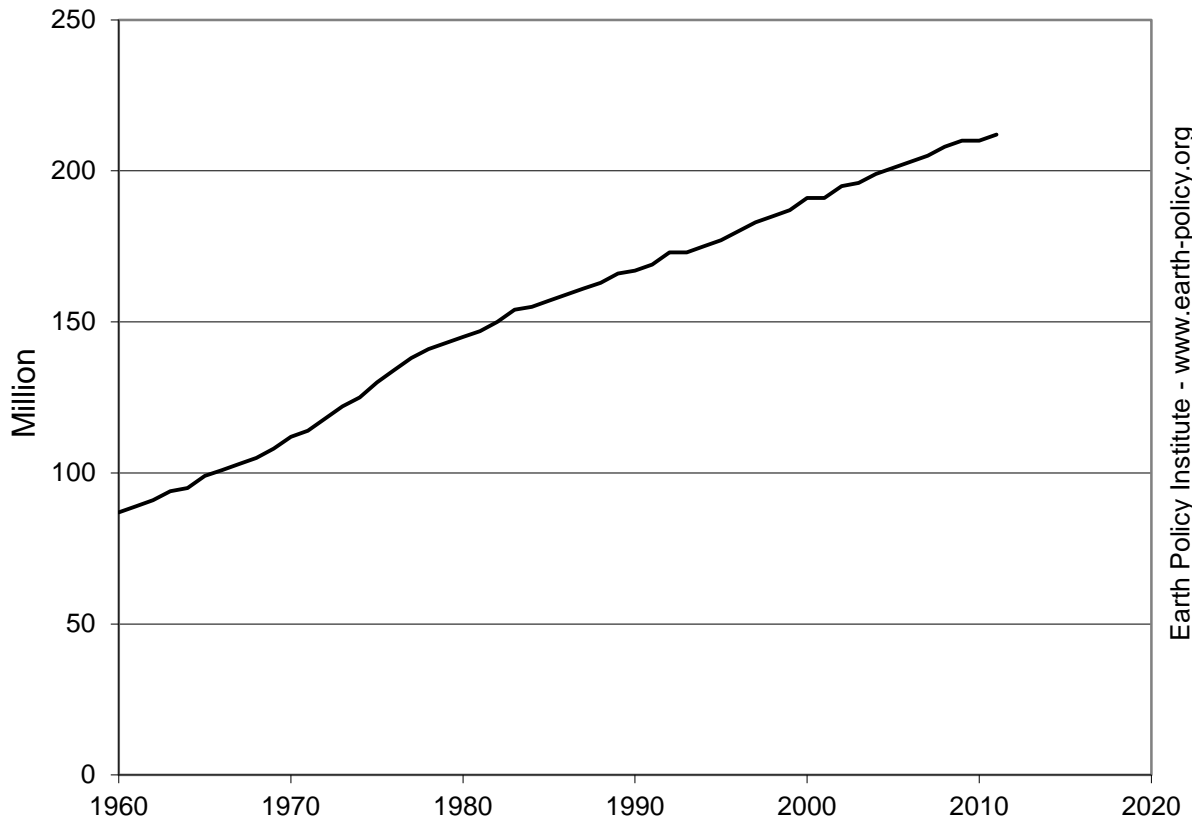
Source: Compiled by Earth Policy Institute from U.S. Department of Energy, Office of Energy Efficiency & Renewable Energy, *Alternative Fuels Data Center*, electronic database, at www.afdc.energy.gov/data, updated April 2014; Hybridcars.com, "Dashboard" (Monthly), at www.hybridcars.com/market-dashboard, viewed 27 March 2015.

Number of Licensed Drivers in the United States, 1960-2011

Year	Licensed Drivers Million
1960	87
1961	89
1962	91
1963	94
1964	95
1965	99
1966	101
1967	103
1968	105
1969	108
1970	112
1971	114
1972	118
1973	122
1974	125
1975	130
1976	134
1977	138
1978	141
1979	143
1980	145
1981	147
1982	150
1983	154
1984	155
1985	157
1986	159
1987	161
1988	163
1989	166
1990	167
1991	169
1992	173
1993	173
1994	175
1995	177
1996	180
1997	183
1998	185
1999	187
2000	191
2001	191
2002	195
2003	196
2004	199
2005	201
2006	203
2007	205
2008	208
2009	210
2010	210
2011	212

Source: Compiled by Earth Policy Institute from "Licensed Drivers, Vehicle Registrations, and Resident Population - Chart," Table DV-1C in U.S. Department of Transportation (DOT), Federal Highway Administration, "Highway Statistics 2011," at www.fhwa.dot.gov/policyinformation/statistics/2011/index.cfm, downloaded 13 January 2014.

Number of Drivers in the United States, 1960-2011



Source: DOT

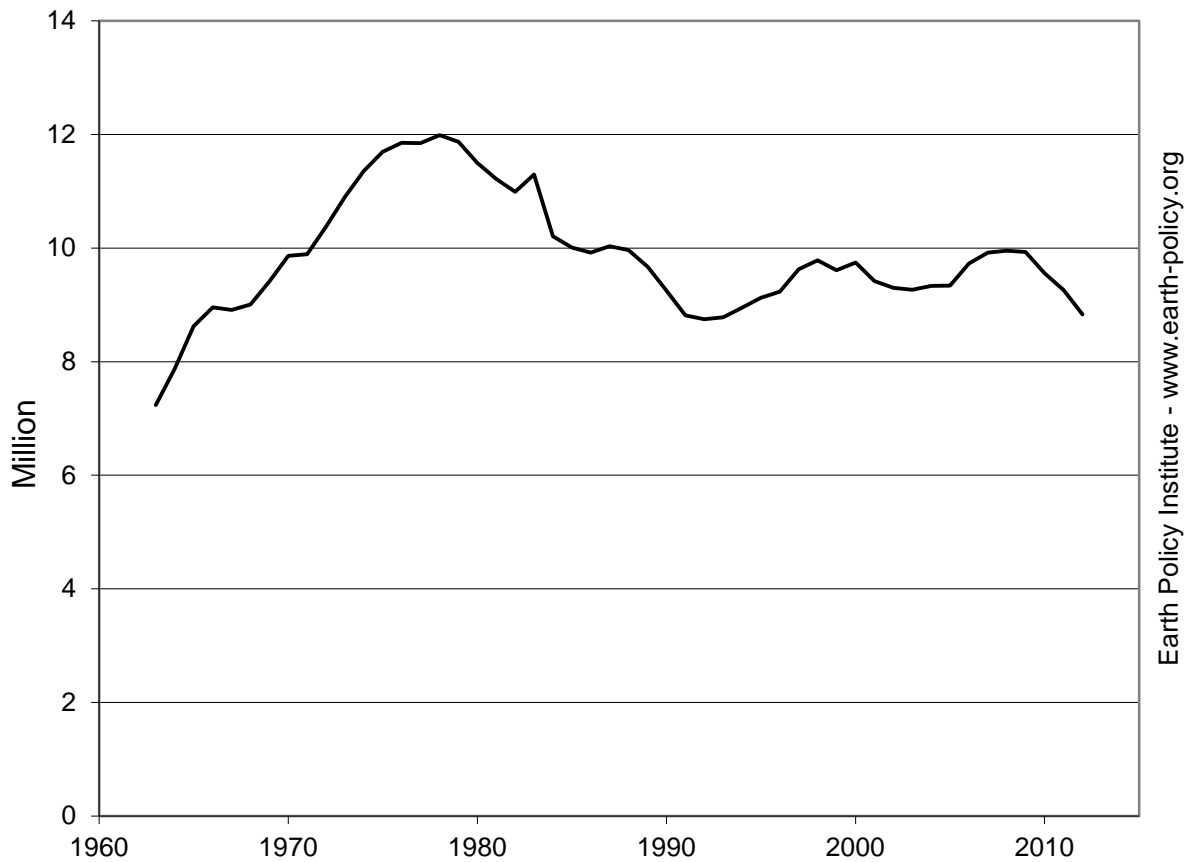
Earth Policy Institute - www.earth-policy.org

Teen Drivers in the United States, Total and Share of Teen Population, 1963-2012

Year	Number of Teen Drivers	Teen Population Aged 16-19	Teen Drivers as a Share of Teen Population
	Million		Percent
1963	7.2	12.5	57.8
1964	7.9	13.1	59.9
1965	8.6	13.7	63.0
1966	9.0	14.1	63.5
1967	8.9	14.4	61.7
1968	9.0	14.7	61.1
1969	9.4	15.1	62.4
1970	9.9	15.4	63.9
1971	9.9	15.8	62.6
1972	10.4	16.2	64.3
1973	10.9	16.5	66.2
1974	11.4	16.7	67.9
1975	11.7	16.9	69.0
1976	11.9	17.1	69.3
1977	11.8	17.2	68.9
1978	12.0	17.3	69.5
1979	11.9	17.2	68.8
1980	11.5	17.2	67.0
1981	11.2	16.9	66.3
1982	11.0	16.6	66.3
1983	11.3	16.2	69.7
1984	10.2	15.8	64.6
1985	10.0	15.5	64.7
1986	9.9	15.2	65.4
1987	10.0	14.9	67.2
1988	10.0	14.8	67.4
1989	9.7	14.7	66.0
1990	9.2	14.6	63.4
1991	8.8	14.5	60.8
1992	8.8	14.5	60.6
1993	8.8	14.5	60.6
1994	8.9	14.6	61.1
1995	9.1	14.9	61.4
1996	9.2	15.1	61.2
1997	9.6	15.4	62.7
1998	9.8	15.7	62.4
1999	9.6	16.0	60.0
2000	9.7	16.3	59.7
2001	9.4	16.6	56.8
2002	9.3	16.8	55.3
2003	9.3	17.0	54.6
2004	9.3	17.1	54.5
2005	9.3	17.3	54.0
2006	9.7	17.4	56.1
2007	9.9	17.4	56.9
2008	10.0	17.6	56.7
2009	9.9	17.7	56.2
2010	9.6	17.7	53.8
2011	9.3	17.7	52.2
2012	8.8	17.7	49.7

Source: Compiled by Earth Policy Institute with number of teen drivers from "Licensed drivers, by sex and percentage in each age group," *Highway Statistics Series* (Washington, DC: U.S. Department of Transportation (DOT), Federal Highway Administration, various years, and number of people age 16-19 from U.N. Population Division, *World Population Prospects: The 2012 Revision*, electronic database, at esa.un.org/unpd/wpp/index.htm, updated 13 June 2013.

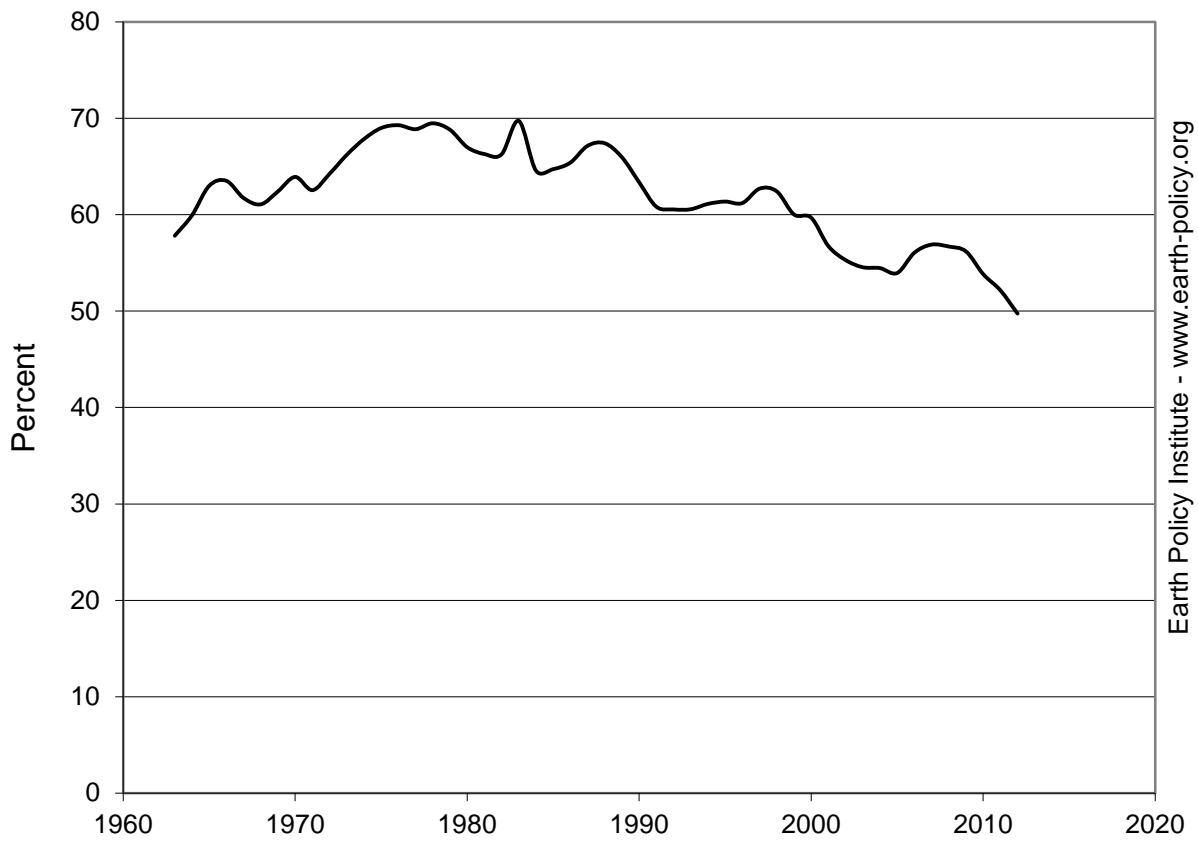
Number of Teen Drivers in the United States, 1963-2012



Source: DOT

Earth Policy Institute - www.earth-policy.org

Teen Drivers as a Share of Teen Population in the United States, 1963-2012



Source: EPI from DOT, UN

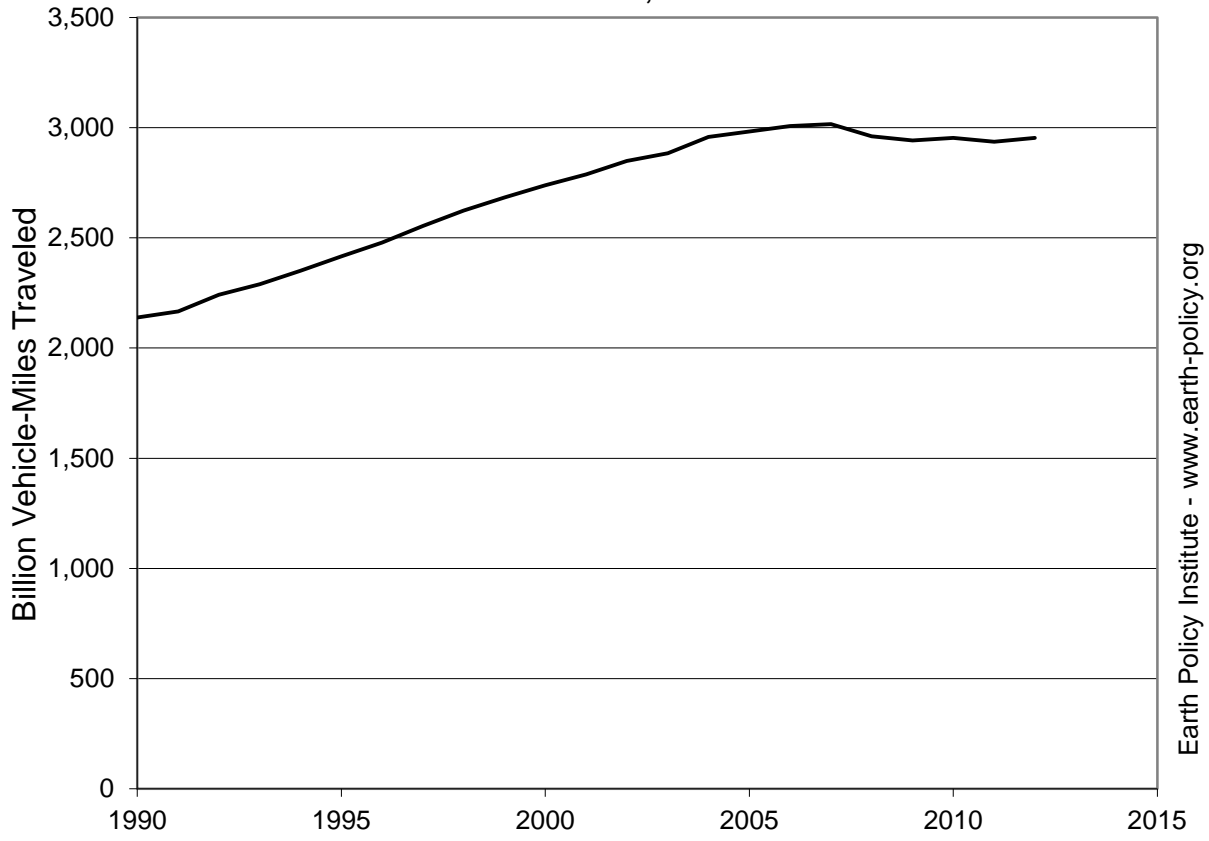
Earth Policy Institute - www.earth-policy.org

Miles Traveled by Cars, Trucks, and Motorcycles in the United States, 1960-2012

Year	Total
	Billion Vehicle Miles
1960	714
1965	883
1970	1,105
1975	1,322
1980	1,521
1985	1,770
1990	2,139
1991	2,166
1992	2,241
1993	2,290
1994	2,351
1995	2,416
1996	2,479
1997	2,555
1998	2,625
1999	2,683
2000	2,739
2001	2,789
2002	2,849
2003	2,883
2004	2,958
2005	2,982
2006	3,008
2007	3,017
2008	2,962
2009	2,942
2010	2,953
2011	2,937
2012	2,954

Source: Compiled by Earth Policy Institute from U.S. Department of Transportation (DOT), Bureau of Transportation Statistics, "National Transportation Statistics: Table 1-35: U.S. Vehicle-Miles (Millions)," at www.bts.gov/publications/national_transportation_statistics, updated July 2014.

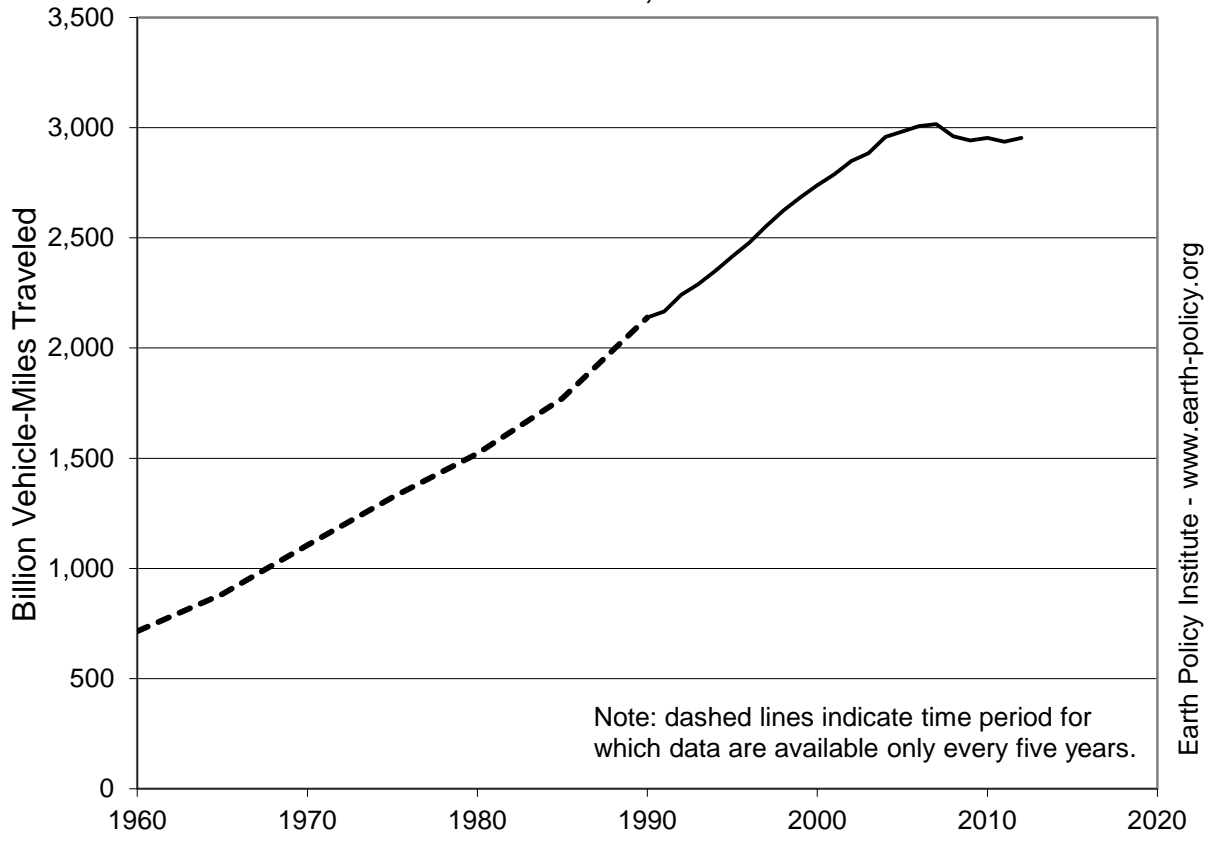
Miles Traveled by Cars, Trucks, and Motorcycles in the United States, 1990-2012



Source: DOT

Earth Policy Institute - www.earth-policy.org

Miles Traveled by Cars, Trucks, and Motorcycles in the United States, 1960-2012



Note: dashed lines indicate time period for which data are available only every five years.

Source: DOT

Earth Policy Institute - www.earth-policy.org

Average U.S. Retail Fuel Prices

Date	Gasoline	Diesel	Electricity
	Dollars per Gasoline Gallon Equivalent		
Apr-2000	1.52	1.29	0.81
Oct-2000	1.54	1.46	0.84
Jun-2001	1.68	1.37	0.90
Oct-2001	1.27	1.19	0.88
Feb-2002	1.11	1.04	0.81
Apr-2002	1.40	1.19	0.83
Jul-2002	1.41	1.18	0.87
Oct-2002	1.44	1.35	0.84
Feb-2003	1.61	1.50	0.79
Dec-2003	1.48	1.34	0.82
Mar-2004	1.74	1.47	0.85
Jun-2004	1.99	1.55	0.92
Nov-2004	1.97	1.93	0.89
Mar-2005	2.11	2.03	0.88
Sep-2005	2.77	2.54	0.98
Jan-2006	2.23	2.32	0.95
May-2006	2.84	2.69	1.05
Sep-2006	2.22	2.37	1.08
Feb-2007	2.30	2.37	0.98
Jul-2007	3.03	2.67	1.10
Oct-2007	2.76	2.81	1.07
Jan-2008	2.99	3.05	1.01
Apr-2008	3.43	3.71	1.08
Jul-2008	3.91	4.22	1.19
Oct-2008	3.04	3.27	1.17
Jan-2009	1.86	2.19	1.11
Apr-2009	2.02	2.04	1.14
Jul-2009	2.44	2.27	1.19
Oct-2009	2.64	2.50	1.12
Jan-2010	2.65	2.57	1.08
Apr-2010	2.84	2.71	1.16
Jul-2010	2.71	2.65	1.19
Oct-2010	2.78	2.75	1.18
Jan-2011	3.08	3.09	1.10
Apr-2011	3.69	3.62	1.18
Jul-2011	3.68	3.54	1.20
Sep-2011	3.46	3.42	1.20
Jan-2012	3.37	3.47	1.14
Mar-2012	3.89	3.71	1.18
Jul-2012	3.52	3.36	1.19
Sep-2012	3.82	3.70	1.19
Jan-2013	3.29	3.55	1.14
Mar-2013	3.59	3.58	1.18
Jul-2013	3.65	3.50	1.25
Oct-2013	3.45	3.51	1.22
Jan-2014	3.34	3.49	1.15
Apr-2014	3.65	3.56	1.19
Jul-2014	3.70	3.51	1.19
Oct-2014	3.34	3.38	1.24
Jan-2015	2.30	2.75	1.27

Source: Compiled by Earth Policy Institute from U.S. Department of Energy, Energy Efficiency and Renewable Energy, *Alternative Fuel Price Reports*, at www.afdc.energy.gov/fuels/prices.html, updated 20 March 2015.

U.S. Motor Gasoline Consumption, 1950-2014

Year	Consumption	
	Million Barrels	Billion Gallons
1950	955	40.1
1951	1,090	45.8
1952	1,081	45.4
1953	1,135	47.7
1954	1,166	49.0
1955	1,264	53.1
1956	1,298	54.5
1957	1,320	55.4
1958	1,354	56.9
1959	1,409	59.2
1960	1,453	61.0
1961	1,476	62.0
1962	1,533	64.4
1963	1,582	66.4
1964	1,611	67.7
1965	1,676	70.4
1966	1,755	73.7
1967	1,810	76.0
1968	1,925	80.9
1969	2,017	84.7
1970	2,111	88.7
1971	2,195	92.2
1972	2,334	98.0
1973	2,436	102.3
1974	2,386	100.2
1975	2,436	102.3
1976	2,554	107.3
1977	2,620	110.0
1978	2,705	113.6
1979	2,568	107.8
1980	2,408	101.1
1981	2,404	101.0
1982	2,387	100.2
1983	2,417	101.5
1984	2,449	102.9
1985	2,493	104.7
1986	2,567	107.8
1987	2,630	110.5
1988	2,685	112.8
1989	2,675	112.3
1990	2,641	110.9
1991	2,623	110.2
1992	2,660	111.7
1993	2,729	114.6
1994	2,774	116.5
1995	2,843	119.4
1996	2,888	121.3
1997	2,926	122.9
1998	3,012	126.5
1999	3,077	129.2
2000	3,101	130.2
2001	3,143	132.0
2002	3,229	135.6
2003	3,261	137.0
2004	3,333	140.0
2005	3,343	140.4
2006	3,377	141.8
2007	3,389	142.3
2008	3,290	138.2
2009	3,284	137.9
2010	3,282	137.9
2011	3,195	134.2
2012	3,178	133.5
2013	3,228	135.6
2014	3,257	136.8

Source: Compiled by Earth Policy Institute from U.S. Department of Energy (DOE), Energy Information Administration (EIA), "U.S. Product Supplied of Finished Motor Gasoline," at tonto.eia.doe.gov/dnav/pet/hist/LeafHandler.ashx?n=p&s=mgfupus1&f=a, updated 27 February 2015; with 2014 from DOE, EIA, "Petroleum & Other Liquids Supply and Disposition," at www.eia.gov/dnav/pet/pet_sum_snd_d_nus_mbbbl_m_cur.htm, updated 27 February 2015; conversion from barrels to gallons from DOE, EIA, "How many gallons of diesel fuel and gasoline are made from one barrel of oil?," at www.eia.gov/tools/faqs/faq.cfm?id=327&t=10, updated 16 December 2014.

U.S. Motor Gasoline Consumption, 1950-2014



Source: EIA

Earth Policy Institute - www.earth-policy.org

Motor Vehicles and Cars Per Person by Country, 2011

	Country	Motor Vehicles Per 1,000 People	Cars Per 1,000 People
1	San Marino	1,263	1,139
2	Monaco	842	729
3	Liechtenstein	826	744
4	United States	786	403
5	Iceland	747	646
6	Luxembourg	741	667
7	Malta	709	595
8	New Zealand	708	597
9	Australia	703	559
10	Italy	682	605
11	Puerto Rico	661	629
12	Lithuania	615	565
13	Canada	608	420
14	Spain	593	482
15	Norway	591	480
16	Cayman Islands	589	457
17	Japan	588	455
18	Germany	588	531
19	Austria	585	536
20	Portugal	584	446
21	France	582	482
22	Greece	580	460
23	Switzerland	573	526
24	Slovenia	568	520
25	Belgium	562	491
26	Faeroe Islands	556	410
27	Poland	554	470
28	Finland	551	475
29	Kuwait	539	449
30	Netherlands	531	471
31	Cyprus	529	421
32	Sweden	525	466
33	United Kingdom	516	454
34	Qatar	514	369
35	Czech Republic	495	437
36	Estonia	494	428
37	Ireland	491	418
38	Denmark	481	395
39	Dominica	470	n.a.
40	Barbados	439	381
41	Bermuda	422	355
42	Bulgaria	417	367
43	Slovakia	382	324
44	Croatia	381	345
45	Malaysia	378	341
46	South Korea	370	284
47	Brunei Darussalam	355	327
48	Trinidad and Tobago	353	n.a.
49	Bahrain	352	297
50	Hungary	345	298
51	Belarus	337	290

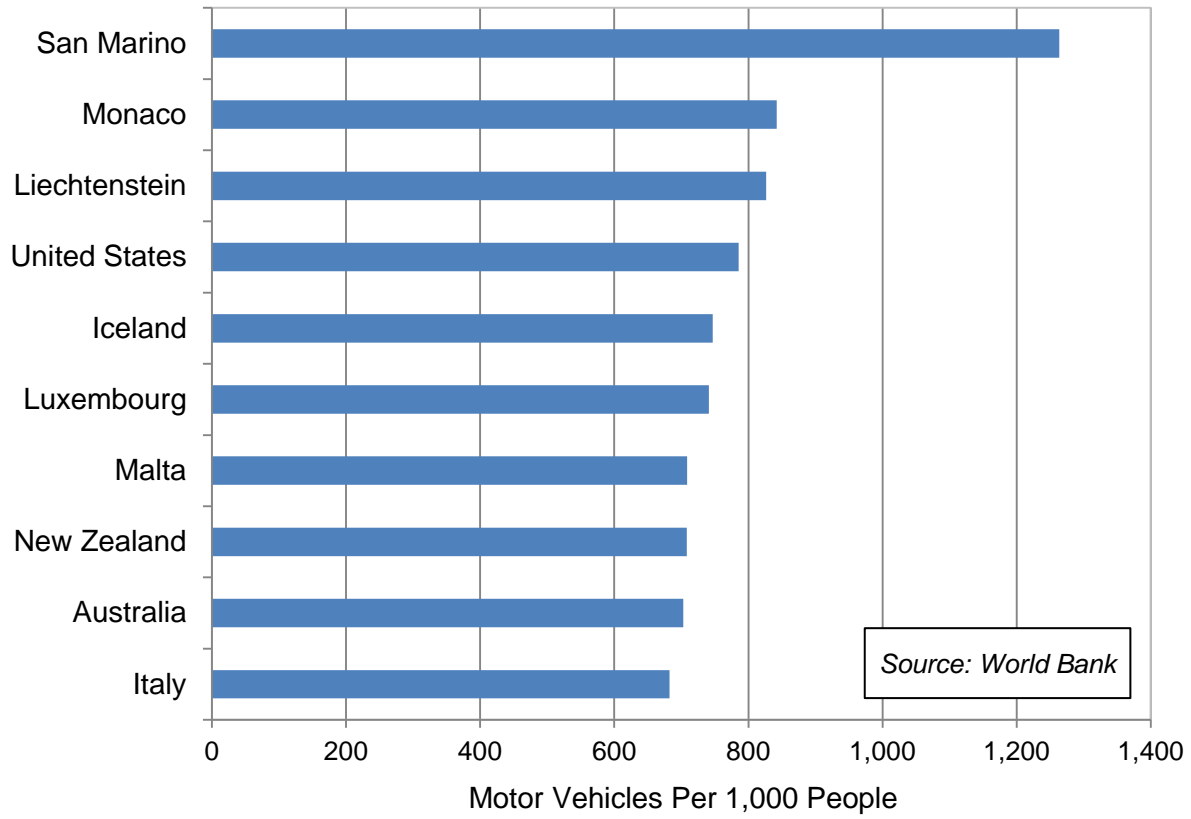
	Country	Motor Vehicles Per 1,000 People	Cars Per 1,000 People
52	Latvia	335	298
53	Israel	330	282
54	Argentina	315	146
55	Montenegro	311	272
56	Suriname	303	236
57	Libya	297	230
58	Mexico	278	195
59	Russian Federation	271	233
60	Serbia	256	231
61	United Arab Emirates	253	237
62	Kazakhstan	246	215
63	Romania	237	203
64	Antigua and Barbuda	229	153
65	Oman	229	177
66	Uruguay	217	195
67	Bosnia and Herzegovina	217	196
68	Brazil	210	179
69	St. Vincent and the Grenadines	204	85
70	Chile	198	137
71	Costa Rica	188	145
72	Ukraine	186	151
73	Saudi Arabia	185	133
74	Seychelles	182	141
75	Fiji	179	118
76	Jamaica	179	142
77	Jordan	177	131
78	Mauritius	174	137
79	Thailand	172	74
80	Macao SAR, China	170	154
81	Macedonia	169	152
82	Botswana	168	97
83	Moldova	166	120
84	Georgia	166	138
85	South Africa	165	112
86	Turkey	164	110
87	Belize	159	121
88	Singapore	151	117
89	Kosovo	150	n.a.
90	Venezuela	147	107
91	Kiribati	144	99
92	Panama	138	102
93	Dominican Republic	132	89
94	Tunisia	130	91
95	Iran	127	113
96	Algeria	119	79
97	Albania	118	94
98	Namibia	114	51
99	Zimbabwe	113	97
100	Azerbaijan	112	95
101	Turkmenistan	109	82
102	Cabo Verde	103	74
103	Armenia	103	94
104	El Salvador	102	53

	Country	Motor Vehicles Per 1,000 People	Cars Per 1,000 People
105	Swaziland	100	51
106	Guyana	97	60
107	Honduras	95	29
108	Morocco	90	65
109	Bolivia	87	20
110	Bahamas	82	294
111	Hong Kong SAR, China	80	61
112	Iraq	79	28
113	Samoa	76	39
114	Syria	73	36
115	Mongolia	71	48
116	Ecuador	71	41
117	Colombia	71	53
118	Bhutan	70	55
119	Guatemala	70	38
120	Indonesia	69	39
121	China	69	54
122	Peru	67	39
123	Kyrgyzstan	59	63
124	Nicaragua	54	21
125	Paraguay	54	28
126	Sri Lanka	48	20
127	Egypt	47	34
128	Tajikistan	39	29
129	Angola	38	8
130	Cuba	38	21
131	Micronesia	37	16
132	Guinea-Bissau	36	29
133	Yemen	35	16
134	West Bank and Gaza	35	28
135	Sudan	34	24
136	Nigeria	31	31
137	Comoros	31	28
138	Philippines	30	9
139	Ghana	30	18
140	Afghanistan	29	21
141	Guinea	29	5
142	Maldives	28	11
143	Republic of Congo	26	15
144	Madagascar	25	7
145	Kenya	25	14
146	Benin	23	18
147	Senegal	23	17
148	Cote d'Ivoire	22	17
149	Lao PDR	22	2
150	Zambia	21	13
151	Cambodia	21	19
152	Pakistan	20	16
153	Cameroon	19	11
154	India	18	11
155	Mozambique	16	11
156	Vietnam	14	14
157	Mali	12	7

Country	Motor Vehicles Per 1,000 People	Cars Per 1,000 People
158 Eritrea	12	6
159 Burkina Faso	10	8
160 Sierra Leone	9	5
161 Malawi	9	4
162 Papua New Guinea	9	6
163 Uganda	8	3
164 Niger	8	6
165 Gambia	8	5
166 Tanzania	7	4
167 Myanmar	7	5
168 Nepal	7	4
169 Equatorial Guinea	7	3
170 Burundi	6	2
171 Chad	6	2
172 Democratic Republic of Congo	5	n.a.
173 Rwanda	5	2
174 Bangladesh	3	2
175 Liberia	3	2
176 Ethiopia	3	1
177 Togo	2	2
178 Sao Tome and Principe	2	2
179 Central African Republic	0	1

Source: Compiled by Earth Policy Institute from World Bank, "Motor Vehicles (per 1,000 people)," *World Development Indicators*, at data.worldbank.org/indicator, updated 9 April 2014.

Motor Vehicles Per Person in Leading Countries, 2011

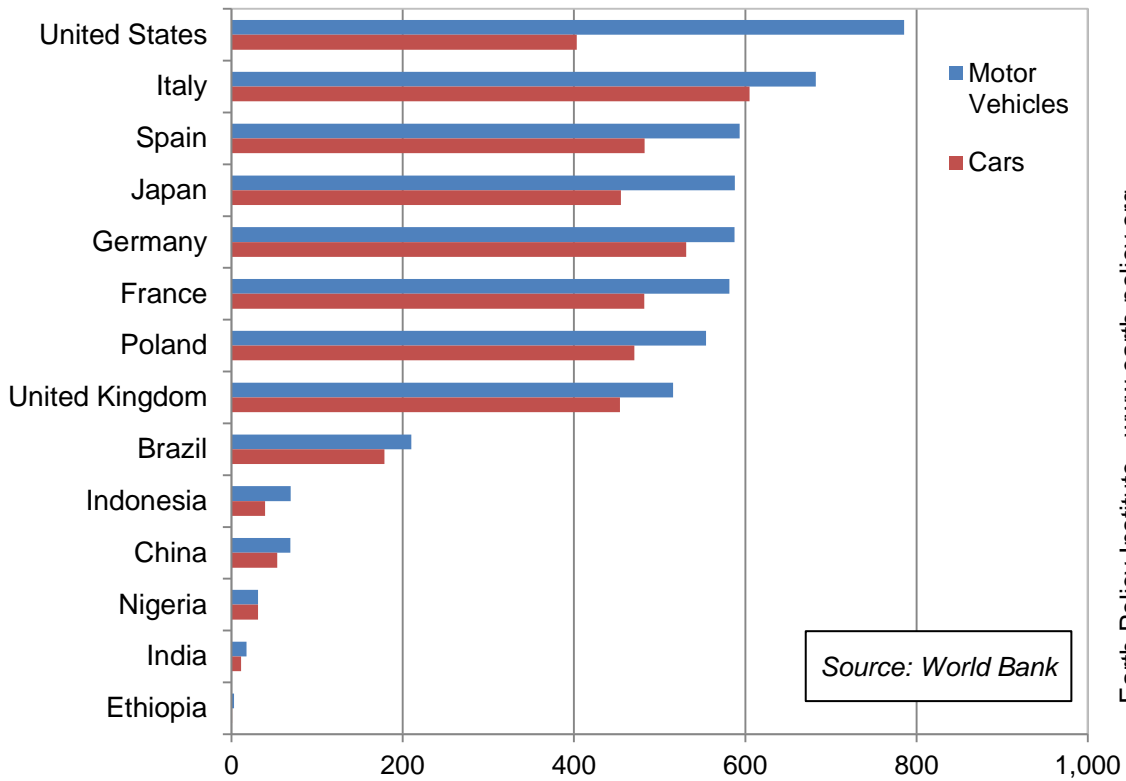


Motor Vehicles and Cars Per Person in Key Countries, 2011

Rank	Country	Motor Vehicles Per 1,000 People	Cars Per 1,000 People
4	United States	786	403
10	Italy	682	605
14	Spain	593	482
17	Japan	588	455
18	Germany	588	531
21	France	582	482
27	Poland	554	470
33	United Kingdom	516	454
68	Brazil	210	179
120	Indonesia	69	39
121	China	69	54
136	Nigeria	31	31
154	India	18	11
176	Ethiopia	3	1

Source: Compiled by Earth Policy Institute from World Bank, "Motor Vehicles (per 1,000 people)," *World Development Indicators*, at data.worldbank.org/indicator, updated 9 April 2014.

Motor Vehicles and Cars Per Person in Key Countries, 2011



Motor Vehicles and Cars Per 1,000 People

Source: World Bank